



Control of Dogs Survey

2005/2006

Contents

	Page
1 Executive Summary	3
2 Introduction	6
2.1 Background	6
2.2 Research aims and objectives	6
2.3 Survey design and response rate	6
3 Dog Wardens	8
3.1 Number of dog wardens employed	8
3.2 Breakdown of dog wardens' duties	9
3.3 Other officers enforcing dog control issues	11
4 Complaints and Warnings	14
4.1 Complaints regarding dog fouling	14
4.2 Public warnings regarding dog fouling	15
5 Designations	18
5.1 Designations under Dogs (Fouling of Land) Act 1996	18
6 Prosecutions	20
6.1 Prosecutions taken by local authorities	20
6.2 Fines and costs	21
7 Fixed Penalty Notice Scheme	22
7.1 Adoption of the Fixed Penalty Notice Scheme	22
7.2 Fixed Penalty Notices issued	22
8 Dog Campaigns	25
8.1 Education campaigns	25
9 Dog waste bins	27
9.1 Dog waste bins provided	27
9.2 Disposing of dog fouling	28

9.3	Clearing up dog fouling	28
10	Clean Neighbourhoods and Environment Act	30
10.1	Awareness of new dog powers	30
10.2	Plans to implement dog control orders	30
	Conclusion	32
	Appendices	35
	Appendix A All results by region	36
	Appendix B Copy of the questionnaire	73

1 Executive Summary

ENCAMS carried out a postal survey of local authorities in 2002 to determine the extent of the dog fouling problem throughout England, and the measures which local authorities put in place to tackle this specific issue. In 2005, a similar questionnaire was distributed to local authorities in England to track these findings over time and also to look at other dog control issues and the proposed use of the new dog powers in the Clean Neighbourhoods and Environment Act which came into force in April 2006. A total of 161 local authorities responded to the survey, giving a response rate of 46%.

Dog Wardens

- 91% of local authorities employed at least one dog warden in their area, compared with 94% in 2002.
- The majority (75%) of authorities employed one or two full-time dog wardens. 15% employed three or more full-time wardens.
- Just less than a third (30%) employed one or two dog wardens on a part-time basis.
- The most time consuming duty for dog wardens was dealing with strays, with only 1% of authorities stating that they did not spend any time on this task.
- Dealing with the enforcement of dog fouling legislation was fairly time consuming with around a third of local authorities spending between 11% and 40% of their time on this.
- The tasks that tended to take up the least amount of time were community campaigns, microchipping, dangerous dogs enforcement, attending to dangerous dogs and education in schools.
- The other officers that enforced dog control issues were most commonly environmental health officers (in 37% of authorities) and environmental enforcement officers (in 35% of authorities).

Complaints and Warnings

- A total of 76,414 complaints were reported in the last three years by local authorities that responded to the survey.
- In 2004/05, the number of recorded complaints ranged from seven in one authority to 1,058 in another.
- The average number of complaints in 2004/05 was 194 per authority.

- A total of 5,656 verbal warnings were given out by the responding authorities during the three-year period. For written warnings, the figure was 8,587.
- In 2004/05, the number of verbal warnings ranged from 0 in 19 authorities to 300 in one authority, while the number of written warnings ranged from 0 in 16 authorities to 750 in one authority.

Designations

- More than nine out of 10 (93%) local authorities had made designations under the Dogs (Fouling of Land) Act 1996, compared with 86% in 2002.
- Over three-quarters (82%) of authorities that had these areas had designated all eligible land.

Prosecutions

- Overall, 1,343 prosecutions had been taken in the last three years by the local authorities that responded to the survey.
- The majority of local authorities (over 60% each year) had not taken any prosecutions.

Fixed Penalty Notice Scheme

- Just over eight in 10 (82%) local authorities had adopted the fixed penalty scheme for dog fouling, compared with less than seven in 10 (67%) in 2002.
- A total of 5,870 fixed penalty notices were issued by responding authorities between April 2002 and March 2005. Of these, 4,402 (75%) had been paid.
- The highest number of fixed penalties issued by a single authority in one year was 405.

Dog Campaigns

- Over eight in 10 (86%) local authorities had some type of campaigning initiative in place to tackle the problem of dog fouling.
- The most frequently implemented initiatives were the erection of anti-fouling signs (93%), enforcement (91%) and the installation of dog waste bins (83%).
- The majority of local authorities had taken multiple approaches to tackle the issue.

Dog Waste Bins

- The majority of local authorities that provided bins had sited them in parks and on footpaths (88% and 68% of authorities respectively).

Clean Neighbourhoods and Environment Act 2006

- Almost all local authorities were aware of the new dog powers in the Clean Neighbourhoods and Environment Act coming into force from April 2006.
- Around nine in 10 planned to implement them for failing to remove dog faeces, while around six out of 10 planned to implement them for not keeping a dog on a lead and permitting a dog to enter land from which dogs are excluded.

2 Introduction

2.1 Background

There are an estimated 6.5m dogs in the UK (Petfood Manufacturers Association, 2003), producing around 1,000 tonnes of faeces every day (Cuthbert Jackson, Dog Warden News, 2002). Research carried out by ENCAMS regarding public attitude towards litter and refuse consistently shows that dog fouling is at the top of the list with regard to the level of concern and offence caused. In 1998 and 2002, ENCAMS carried out a survey of local authorities in England on the issue of dog fouling. This document outlines the findings of a repeat study designed to provide up-to-date information on dog control issues, from the perspective of local authorities. Trends will be gauged through comparisons with the previous study carried out in 2002.

2.2 Research aims and objectives

This survey aimed to understand the extent of the dog fouling problem and the impact it has on local authorities and their local communities. It explores how dog control problems are currently being dealt with, what campaigns are in place to help tackle them and how the problems have changed over time.

2.3 Survey design and response rate

The project was undertaken by ENCAMS' research team. A self-completion questionnaire was sent to all local authorities in England in November 2005 and was largely based on that used for the previous study in 2002, to allow for comparison of key issues over time. Subsequent reminder letters and questionnaires were sent to local authorities in mid-December. By the end of the fieldwork, 161 local authorities had responded - a response rate of 46%. Table 1 shows the response rate by region.

Table 1 – Response rate by region to ENCAMS questionnaire

Region	Response rate (%)
South West	52
North West	51
East Midlands	50
North East	48
Yorkshire & Humber	48
East of England	46
South East	46
West Midlands	41
London	24

Results for individual regions are not referred to throughout the main report. However, tabulations for each question are provided in Appendix A.

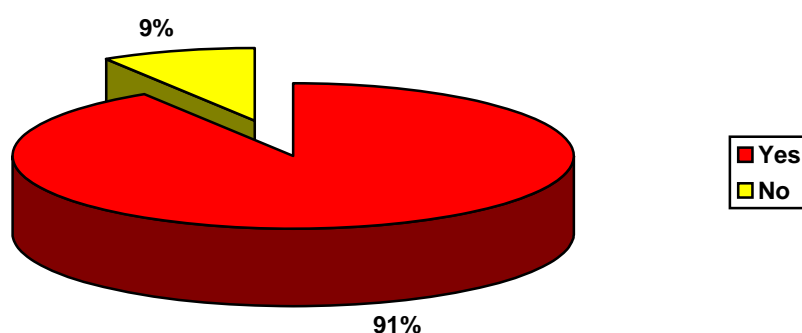
Some of the sample sizes are very small, therefore caution should be used when interpreting subsections of the data. Due to rounding, some totals do not add to 100%.

3 Dog Wardens

3.1 Number of dog wardens employed

Respondents were asked if they employed dog wardens in their area. Figure 3.1 illustrates the results.

Figure 3.1 Do you have dog wardens employed within your authority?



The chart shows that around nine in 10 (91%) local authorities employed at least one dog warden in their area, compared with 94% in 2002.

Those authorities that had dog wardens were asked how many full and part time officers they employed. The results are shown in table 3.2.

Table 3.2 Number of dog wardens per authority

	Part time (%)	Full time (%)
0	65	9
1 – 2	30	75
3 – 5	2	13
6+	3	2
Total	100%	99%

The results show that three-quarters (75%) of local authorities employed one or two full-time dog wardens, while 13% employed three to five full-time dog wardens. Just less than a third (30%) employed one or two part-time dog wardens.

Around a tenth (9%) of local authorities did not employ any full-time dog wardens, while around two-thirds (65%) did not employ wardens on a part-time basis.

3.2 Breakdown of dog wardens' duties

Local authorities were asked to give an approximation of the percentage of time per year spent by the dog wardens on a range of activities. The results can be found in figure 3.3.

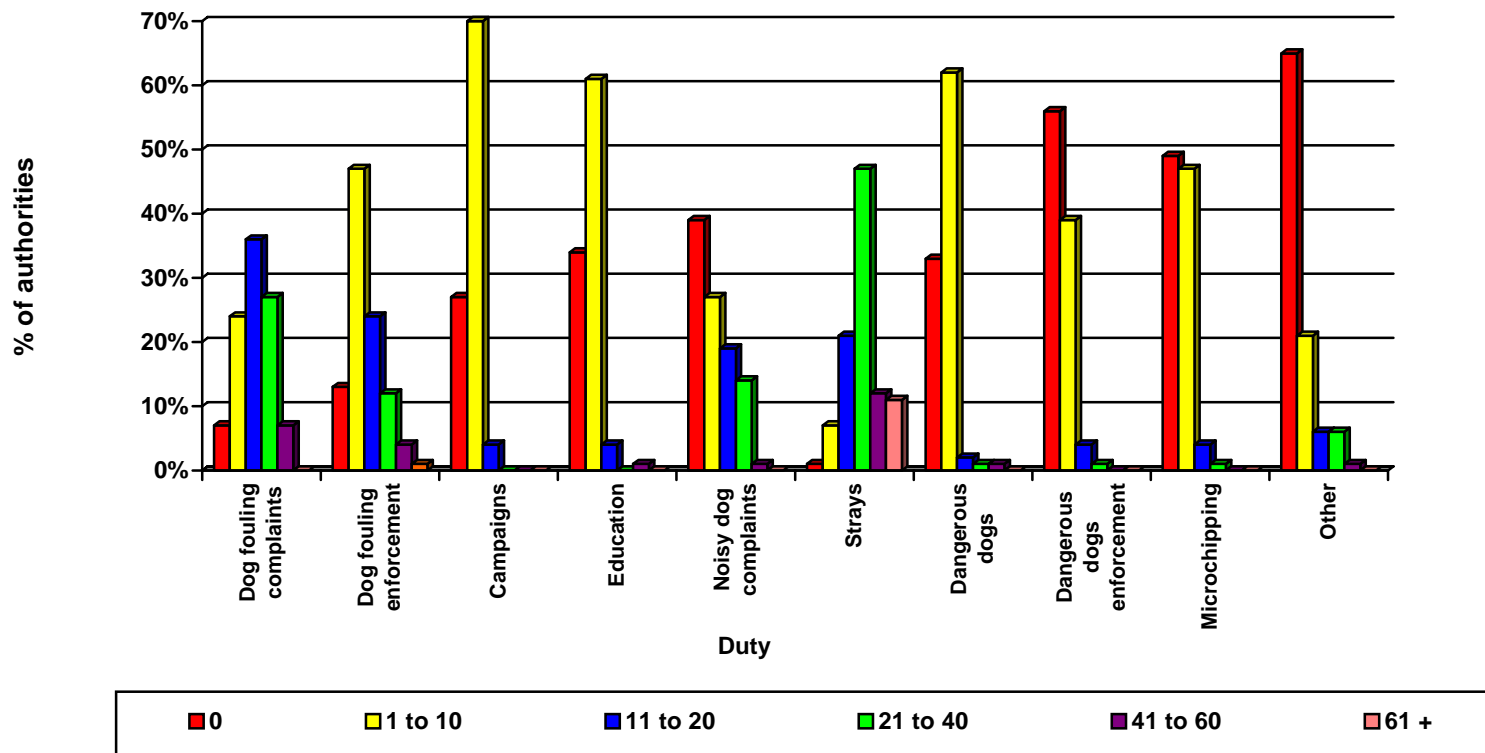
The most time consuming duty for dog wardens was dealing with strays, with only 1% of local authorities stating that they spent no time on this, while just under a quarter (23%) spent over 40% of their time dealing with strays.

Dealing with the enforcement of dog fouling legislation was fairly time consuming, with around a third of local authorities spending between 11% and 40% of their time on this activity. The enforcement of dog fouling legislation was higher up the agenda for dog wardens than it was three years ago, as in 2002 most dog wardens spent less than 10% of their time on enforcement issues.

Community campaigns, microchipping, dangerous dogs enforcement, attending to dangerous dogs and education in schools tended to take up the least amount of dog wardens' time, with around nine out of 10 local authorities stating that their wardens spent less than 10% of their time on each of these activities.

'Other' responses included animal welfare, administration, animal licensing and patrols. A full list of other responses can be found in Appendix A.

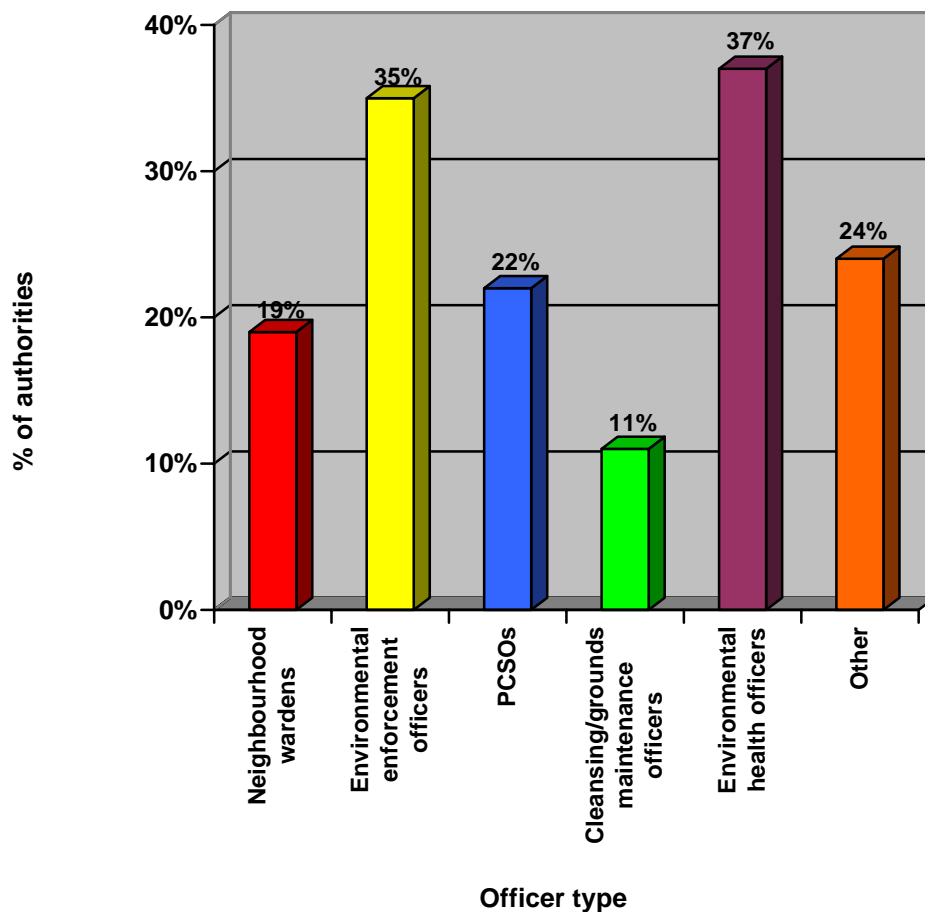
Figure 3.3 Percentage of time spent on various duties



3.3 Other officers enforcing dog control issues

Local authorities were asked if any other officers within their authority enforce dog control issues. The results are shown in figure 3.4 below.

Figure 3.4 Other officers enforcing dog control issues



Almost two-fifths (37%) of local authorities said that environmental health officers (EHOs) working in their authority enforced dog control issues. A similar proportion (35%) said that environmental enforcement officers (or similar) enforced dog control issues. Around a fifth said that Police Community Support Officers (22% PCSOs) and neighbourhood wardens (19%) enforced dog control issues, while almost a quarter (24%) said that 'other' officers within their authority enforced dog control issues. These included:

- countryside/park rangers (*mentioned by four authorities*);
- beach inspectors (*three authorities*);
- contracted dog wardens (*three authorities*).

Those authorities that said that these officers enforced dog control issues in their area were asked how many officers enforced the issues. The results are shown in the table below and are based on those authorities that specified the number of officers.

Table 3.5 Number of other officers enforcing dog control issues

	Neighbourhood wardens (%)		Environmental enforcement officers (%)		PCSOs (%)		Cleansing/grounds maintenance operatives (%)		EHOs (%)	
	F/t	P/t	F/t	P/t	F/t	P/t	F/t	P/t	F/t	P/t
0	35	94	29	89	27	87	54	89	0	83
1 – 2	29	0	26	6	9	9	15	0	100	17
3 – 5	6	0	17	3	27	0	8	11	0	0
6+	29	6	29	3	36	4	23	0	0	0
Total	99%	100%	101%	101%	99%	100%	100%	100%	100%	100%

Full time cleansing/grounds maintenance operatives did not enforce dog control issues in over half (54%) of authorities, for part time operatives, this figure was much higher at 89%. Over a third (36%) of local authorities had six or more full time PCSOs that enforced dog control issues, while over a quarter (29%) each had at least six full time neighbourhood wardens and environmental enforcement officers enforcing dog control issues and around a quarter (23%) had at least six full-time cleansing/grounds maintenance operatives.

Further detail about the officer types can be found below.

Neighbourhood wardens

- The average number of full time neighbourhood wardens per authority was 9.0. The numbers ranged from 0 in 112 authorities to 50 in one authority.
- For part-time wardens, the average was 4.4, while the range was 0 in 123 authorities to 80 in another.

Environmental enforcement officers

- The average number of full-time environmental enforcement officers per authority was 4.5. The number of full-time environmental enforcement officers ranged from 0 in 95 authorities to 30 in one authority.

- For part-time environmental enforcement officers, the average was 0.6, the range was 0 in 117 authorities to 15 in one authority.

Police Community Support Officers

- The average number of full-time PCSOs per authority was 5.1. The number of full-time PCSOs ranged from 0 in 107 authorities to 15 in one authority.
- For part-time PCSOs, the average was 0.3, the range was 0.3 in 121 authorities to six in one authority.

Cleansing/grounds maintenance operatives

- The average number of full-time cleansing/grounds maintenance operatives per authority was 2.6. The number of full-time cleansing/grounds maintenance operatives ranged from 0 in 125 authorities to 11 in one authority.
- For part-time operatives, the average was 0.3, the range was 0 in 126 authorities to three in one authority.

Environmental health officers

- The average number of full-time environmental health officers per authority was 3.6. The number of full-time environmental health officers ranged from 0 in 94 authorities to 33 in one authority.
- For part-time officers, the average was 0.7, the range was 0 in 111 authorities to ten in one authority.

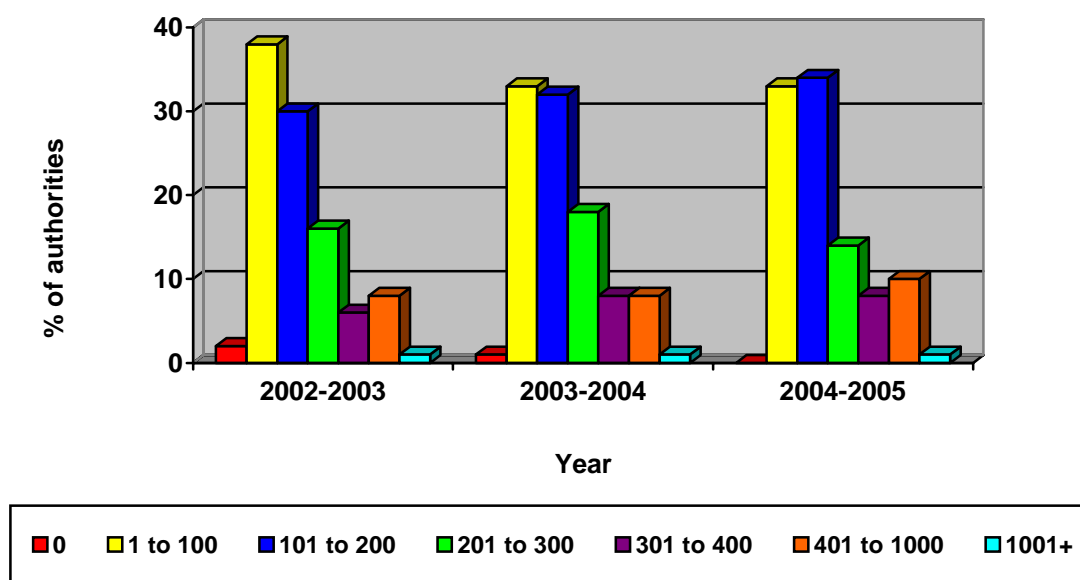
4 Complaints and Warnings

4.1 Complaints regarding dog fouling

Local authorities were asked to state how many complaints they had received from the public regarding dog fouling in the last three years.

The local authorities that responded to the survey reported a total of 76,414 complaints between April 2002 and March 2005. Extrapolation of this data provides an estimate that there were over 200,500 complaints made by members of the public in England between April 2002 and March 2005. Figure 4.1 illustrates the spread of complaints for each financial year.

Figure 4.1 Dog fouling complaints 2002 - 2005



For 2002 to 2003, the most frequent response was 1 to 100 complaints per authority. For 2003 to 2004 and 2004 to 2005, there was a more even split between the proportions of authorities recording 1 to 100 and 101 to 200 complaints. Further details of each year are as follows:

4.1.1 Complaints – April 2002 to March 2003

- Responding authorities recorded a total of 24,009 complaints.
- This equates to an average of 185 complaints per authority.
- The level of complaints ranged from 0 in two authorities to 1,220 in one authority.

- 31 local authorities that returned the questionnaire did not provide a response to this question.

4.1.2 Complaints – April 2003 to March 2004

- Responding authorities recorded a total of 25,122 complaints.
- This equates to an average of 189 complaints per authority.
- The level of complaints ranged from 0 in one authority to 1,286 in another authority for the same period.
- 28 local authorities that returned the questionnaire did not provide a response to this question.

4.1.3 Complaints – April 2004 to March 2005

- Responding authorities recorded a total of 27,283 complaints.
- This equates to an average of 194 complaints per authority.
- The level of complaints ranged from 7 in one authority to 1,058 in another authority for the same period.
- 20 local authorities that returned the questionnaire did not provide a response to this question.

4.2 Public warnings regarding dog fouling

Respondents were asked to state how many warnings, written and verbal, they had given to members of the public in the last three years. Figures 4.2 and 4.3 show the results obtained for verbal and written warnings respectively.

Figure 4.2 Verbal warnings 2002 – March 2005

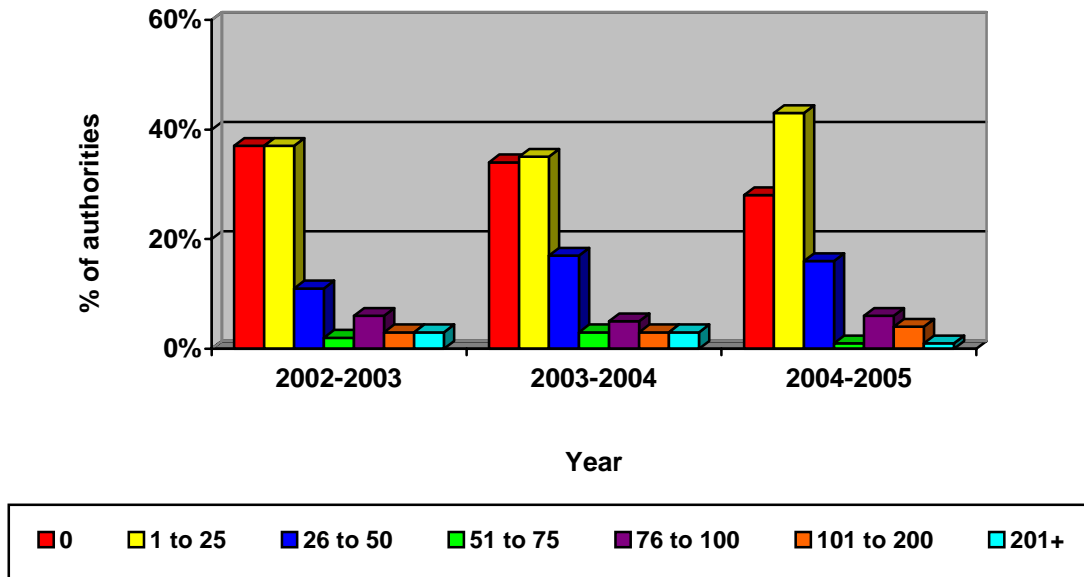
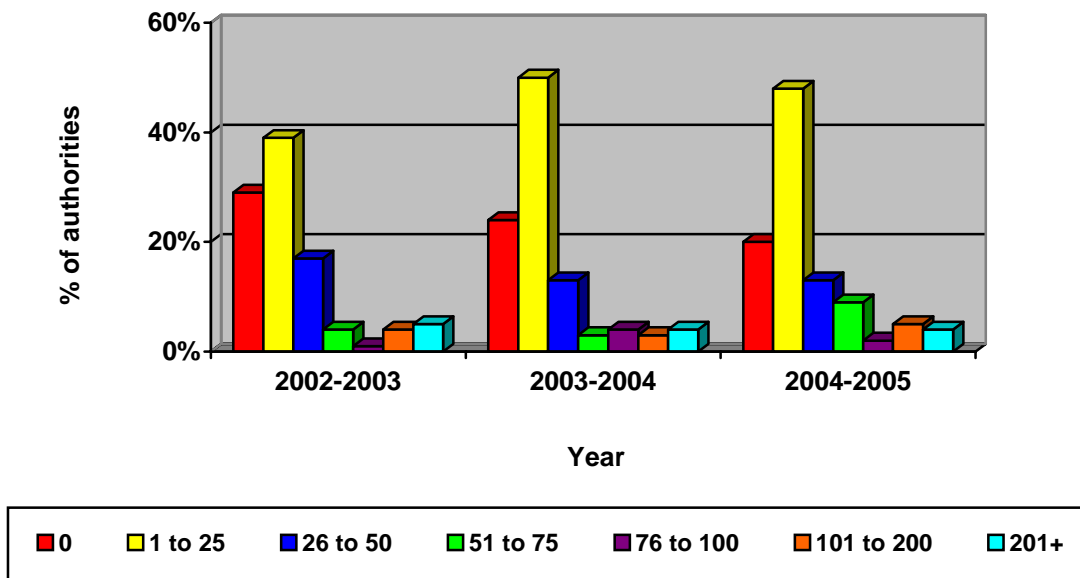


Figure 4.3 Written warnings 2002 - 2005



It was noted by some authorities that verbal records are often not kept. The results are based on those authorities that answered the question and therefore had kept a record.

The total number of written warnings decreased from 2,741 in 2002/2003 to 2,442 in 2003/2004, but then increased again to 3,404 in 2004/2005. An increase was observed in the number of verbal warnings from 1,823 in 2002/2003 to 1,929 in 2003/2004 but in 2004/2005, a decrease was recorded. Verbal warnings were down to 1,904. Further details of warnings given by financial year are as follows:

4.2.1 Warnings - April 2002 to March 2003

- A total of 1,823 verbal warnings were given by the responding authorities between April 2002 and March 2003.
- This equates to an average of 29 verbal warnings per authority.
- The level of verbal warnings given ranged from 0 (in 23 authorities) to one authority giving 500.
- During this period 2,741 written warnings were given to the public, equating to an average of 37 per authority.
- Written warnings ranged from 0 (in 22 authorities) to one authority giving 460.

4.2.2 Warnings - April 2003 to March 2004

- A total of 1,929 verbal warnings were given by the responding authorities between April 2003 and March 2004.
- This equates to an average of 30 verbal warnings per authority.
- The level of verbal warnings given ranged from 0 (in 22 authorities) to one authority giving 450.
- During this period 2,442 written warnings were given to the public, equating to an average of 32 per authority.
- Written warnings ranged from 0 (in 18 authorities) to one authority giving 407.

4.2.3 Warnings - April 2004 to March 2005

- A total of 1,904 verbal warnings were given by the responding authorities between April 2004 and March 2005.
- This equates to an average of 28 verbal warnings per authority.
- The level of verbal warnings given ranged from 0 (in 19 authorities) to one authority giving 300.
- During this period 3,404 written warnings were given to the public, equating to an average of 42 per authority.
- Written warnings ranged from 0 (in 16 authorities) to one authority giving 750.

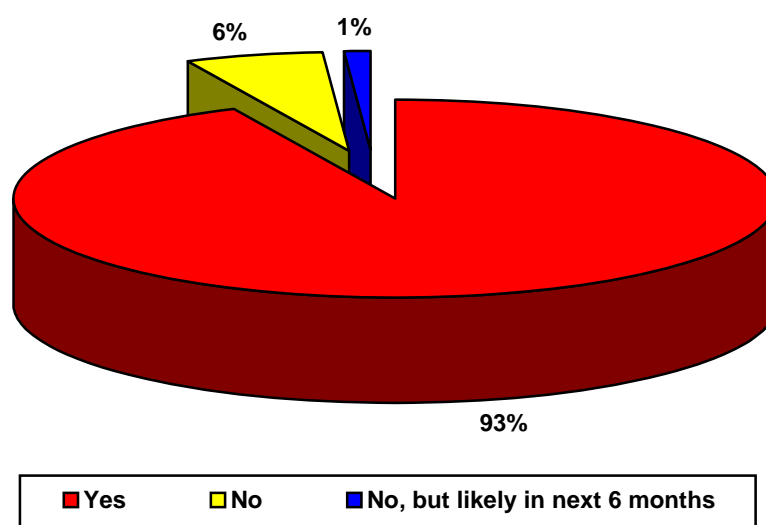
5 Designations

5.1 Designations under the Dogs (Fouling of Land) Act 1996¹

The Dogs (Fouling of Land) Act 1996 is an adoptive power that allows local authorities to designate certain land in their area as poop scoop areas where dog owners must clean up after their pets. The designated land must be open to the air and publicly accessible and can include land that is not under the authorities' ownership.

Respondents were asked if they had made any designations under this act within their authority. The results are illustrated in figure 5.1.

Figure 5.1 Has your authority made any designations under the Dogs (Fouling of Land) Act 1996?

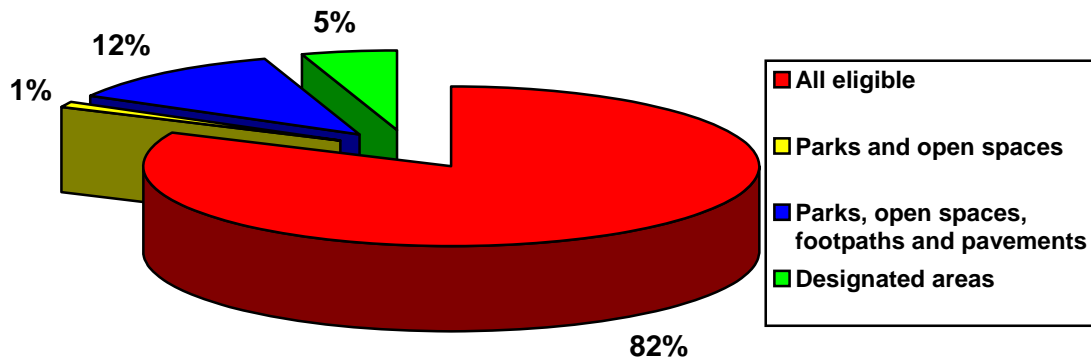


Just over nine in 10 (93%) local authorities had made designations, which is an increase on the 86% that had made designations in the 2002 survey.

The respondents that had designated areas within their authority were asked which areas the designations covered. Figure 5.2 illustrates these findings.

¹ From April 2006, designations will no longer be able to be made under this legislation, but a dog control order can be made to apply to an area of land under Part Six of the Clean Neighbourhoods and Environment Act 2005.

Figure 5.2 What types of land are covered by designations?



As found in the 2002 survey, over three-quarters of authorities that had taken action (77% in 2002 and 82% in 2005) were utilising the power of designation fully by designating all eligible land in their area.

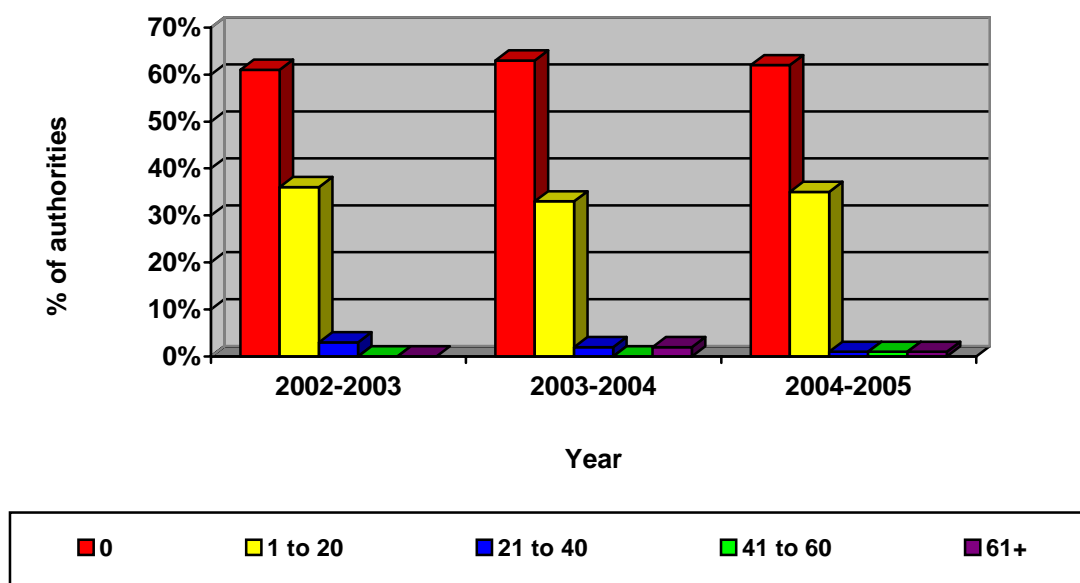
Those that had made designations were also asked to state when the designations came into effect. Around a quarter (23%) said that the designations came into effect in 1997, a fifth (19%) said that they had come into effect in 1998.

6 Prosecutions

6.1 Prosecutions taken by local authorities

Local authorities have the power to prosecute members of the public who allow their dog to foul in public places. Respondents were asked to state how many prosecutions had been taken in their area in the last three years. Figure 6.1 illustrates the findings for each of the financial years.

Figure 6.1 How many prosecutions have been taken in the last three years?



Overall, 1,343 prosecutions had been taken in the last three years by the local authorities that responded to the study. Figure 6.1 shows that the majority of authorities, however, were not utilising this power and had not taken any prosecutions.

Further detail for each financial year is as follows:

6.1.1 Prosecutions - April 2002 to March 2003

- A total of 262 prosecutions were taken from April 2002 to March 2003, equating to an average of 2.2 prosecutions per authority.
- The prosecutions ranged from 0 in some authorities to 29 in others.

6.1.2 Prosecutions - April 2003 to March 2004

- A total of 537 prosecutions were taken from April 2003 to March 2004, equating to an average of 4.3 prosecutions per authority.
- The range of prosecutions was 0 in some authorities to 121 in one other.

6.1.3 Prosecutions - April 2004 to March 2005

- A total of 544 prosecutions were taken and 44 prosecutions were still pending from April 2004 to March 2005, equating to an average of 4.0 and 0.4 prosecutions per authority respectively (or 4.4 overall).
- The number of prosecutions ranged from 0 in some authorities to 114 in one authority.

6.2 Fines and costs

The maximum penalty available under prosecution for designations under the Dogs (Fouling of Land) Act 1996 is £1,000, though there are variations for the maximum fine according to local byelaws. There was a wide range of fines and costs awarded by the responding authorities that had taken prosecutions. The spread of these results is illustrated further in table 6.2.

Table 6.2 Range of fines and costs

	£1-£25	£26-£50	£51-£75	£76-£100	£101-£200	£201+
Lowest fines	19	51	12	9	8	0
Highest fines	0	23	12	24	31	9
Lowest costs	20	39	14	11	13	3
Highest costs	3	19	17	23	23	14

All figures are percentages of local authorities

Fines ranged from £10 to £1,200 and costs ranged from £10 to £800.

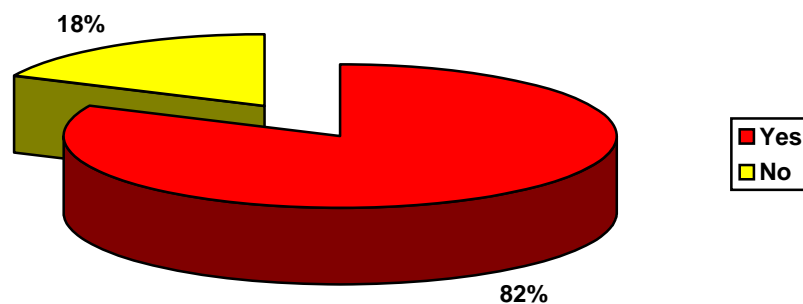
7.0 Fixed Penalty Notice Scheme

Local authorities can adopt the Fixed Penalty Notice Scheme for dog fouling, which enables them to issue fixed penalties to the public incurring a fine of £50. Local authorities can authorise contractors, such as dog wardens, to enforce the scheme.

7.1 Adoption of the Fixed Penalty Notice Scheme

Local authorities were asked if they had adopted the Fixed Penalty Notice Scheme for dog fouling. The results are shown in figure 7.1 below.

Figure 7.1 Has your authority adopted the Fixed Penalty Notice Scheme?

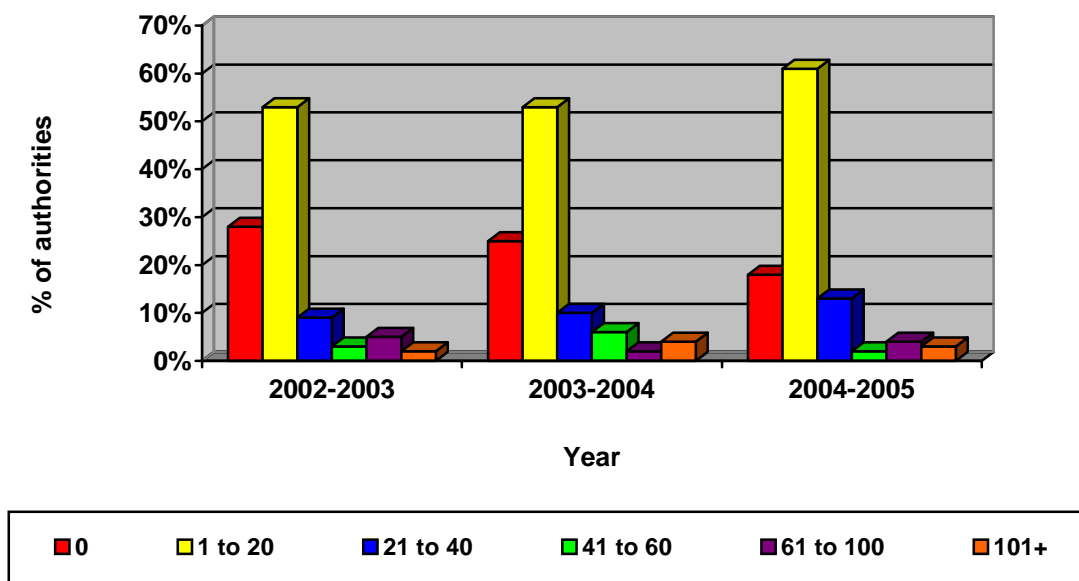


Around eight in 10 (82%) of local authorities had adopted the Fixed Penalty Notice Scheme for dog fouling, compared with less than seven in 10 (67%) in 2002.

7.2 Fixed penalty notices issued

The chart below, figure 7.2, shows the number of fixed penalty notices issued for dog fouling between April 2002 and March 2005. Percentages are calculated out of those authorities that had adopted the scheme.

Figure 7.2 Fixed penalty notices issued - April 2002 to March 2005



The most frequent response was 1 to 20 fixed penalty notices issued per authority per year.

A total of 5,870 fixed penalty notices were issued by the responding authorities between April 2002 and March 2005. Of these notices, 4,402 (75%) had been paid. Extrapolating these figures to represent the whole of England suggests that approximately 19,000 fixed penalty notices were issued during the three-year period.

In the 2002 study, 2,358 fixed penalty notices had been issued by responding authorities and 1,826 (77%) of them had been paid. It was estimated that for the period April 1999 to March 2002, 13,500 fixed penalty notices were issued in England. When this figure is compared with the figure obtained from this study, it is apparent that local authorities have been more proactive with enforcement.

7.2.1 Fixed penalty notices – April 2002 to March 2003

- There were 1,467 fixed penalty notices issued, of which 1,164 (79%) were paid.
- This equated to an average of 16 fixed penalty notices issued per authority.
- Figures ranged from no notices issued (in 26 authorities) to one authority issuing 247.

7.2.2 Fixed penalty notices – April 2003 to March 2004

- There were 1,995 fixed penalty notices issued, of which 1,509 (76%) were paid.
- This equated to an average of 18 fixed penalty notices issued per authority.
- Figures ranged from no notices (in 27 authorities) to one authority issuing 370.

7.2.3 Fixed penalty notices – April 2004 to March 2005

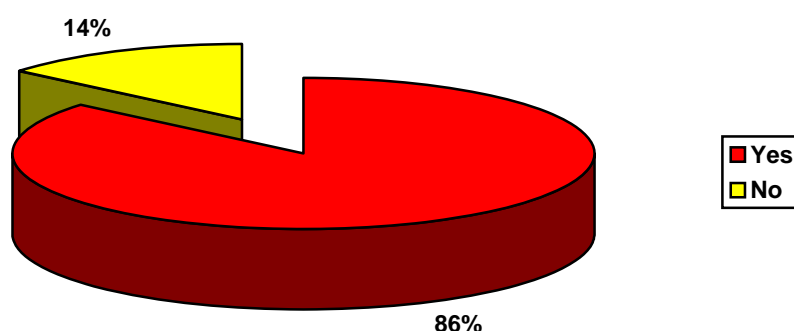
- There were 2,408 fixed penalty notices issued, of which 1,729 (72%) were paid.
- This equated to an average of 20 fixed penalty notices issued per authority.
- Figures ranged from no notices (in 21 authorities) to one authority issuing 405.
- Extrapolating this data provides an estimate that over 7,000 fixed penalty notices were issued by local authorities in England during this time period.

8 Dog Campaigns

8.1 Education campaigns

Local authorities were asked if they had implemented any education campaigns to encourage responsible dog ownership. The results are shown in figure 8.1 below.

Figure 8.1 Does your authority have an education campaign to encourage responsible dog ownership?



Over eight in ten (86%) local authorities that responded to the survey had some type of education campaign in place to tackle the problem of dog fouling, which is a slight decrease on the figure from the 2002 survey (92%). These local authorities were asked to specify what their campaign consisted of (more than one answer was allowed). The results are shown in figure 8.2.

Table 8.2 What does this campaign consist of?

Initiative	% of local authorities
Erection of anti-fouling signs	93
Enforcement	91
Installing dog waste bins	83
Leaflet distribution	75
Posters/displays in public places	73
Work with schools	73
Providing free poop scoops (or equivalent)	68
Media coverage/advertising	60
Dog toilets in parks	9
Other	25

The most frequently implemented initiative to combat dog fouling by local authorities was the erection of anti-fouling signs, around nine in 10 (93%) of local authorities had taken action in this way. A similar proportion (91%) was tackling dog fouling with enforcement. Around eight out of 10 (83%) said that their education campaign consisted of installing dog waste bins, while around three-quarters distributed leaflets (75%), displayed posters in public places (73%) and worked with schools (73%).

A quarter (25%) of local authorities said that their campaign consisted of other elements aside from those mentioned in the questionnaire. A full list of the 'other' responses can be found in Appendix A.

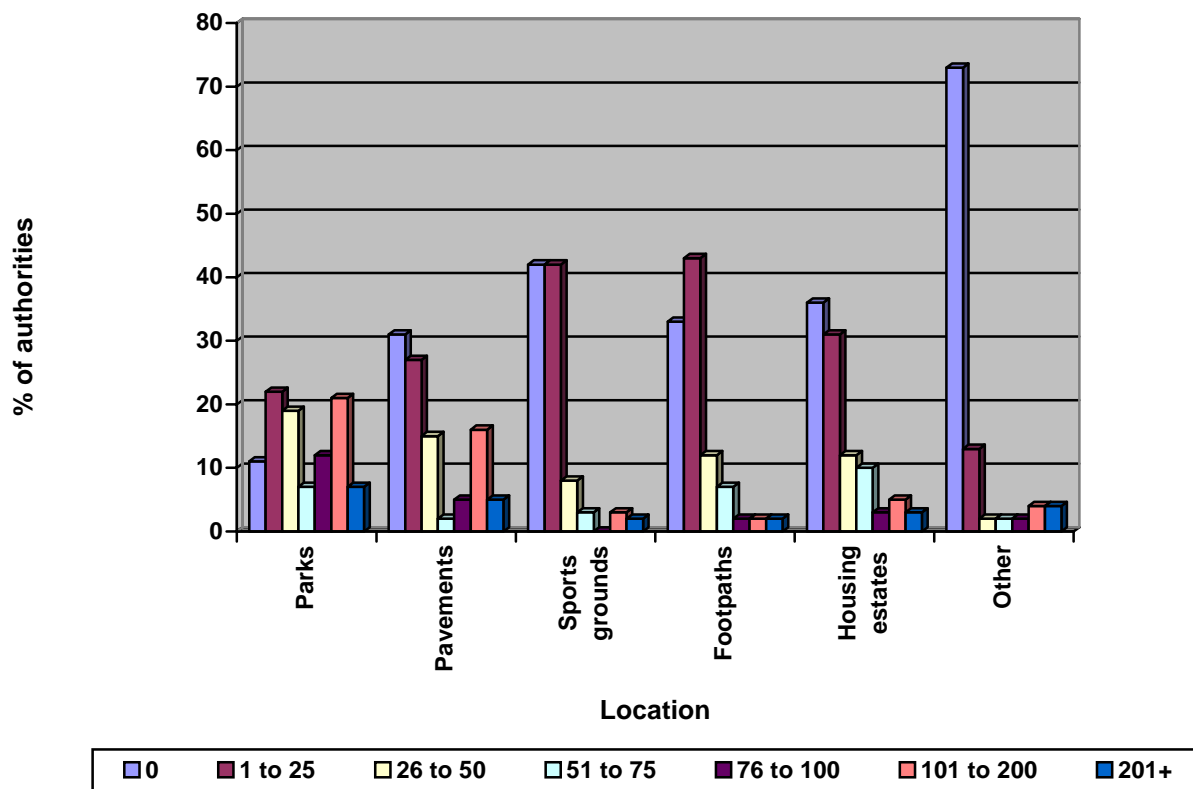
9 Dog Waste Bins

There is no requirement under the law for authorities to provide special bins for dog waste however, many do provide these bins in public places to encourage responsible dog ownership.

9.1 Dog waste bins provided

Local authorities were asked how many dog bins they provided in a range of areas within their authority. Figure 9.1 illustrates the findings.

Figure 9.1 How many dog bins does your authority provide in the following areas?

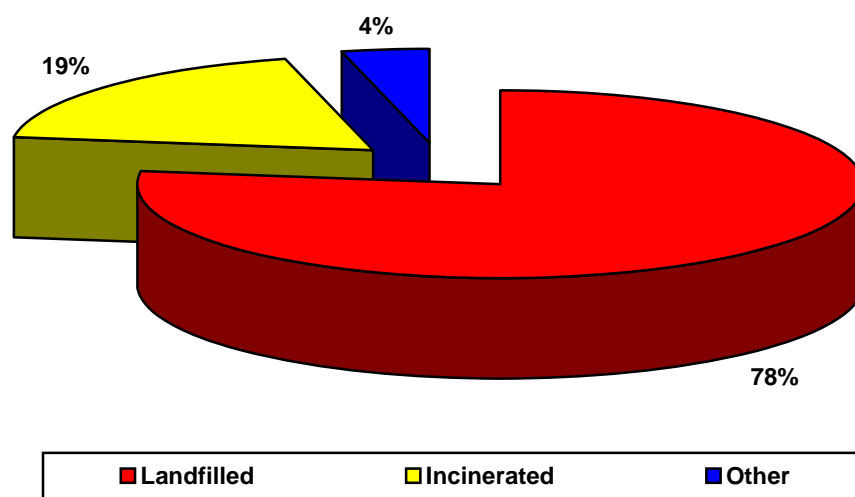


The majority of local authorities provided bins situated in parks (88% of authorities) followed by footpaths (68% of authorities). Very few authorities (22%) said that they provide dog bins on beaches. This is probably because many don't have beaches within their boundaries.

9.2 Disposing of dog fouling

Local authorities that had dog waste bins were asked whether the contents of these bins was landfilled or incinerated. Figure 9.3 shows the results.

Figure 9.2 Where are the contents of these bins disposed of?



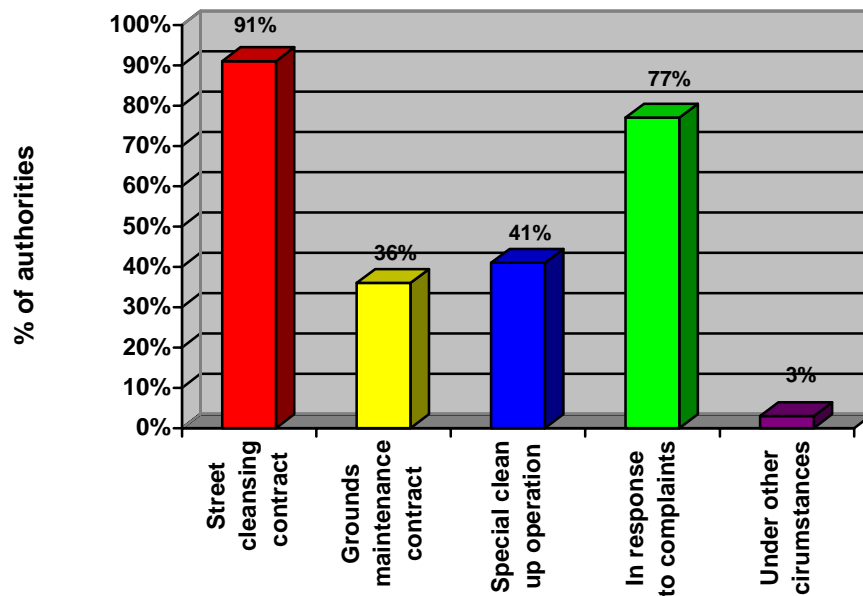
Around a fifth (19%) of local authorities sent the contents of their dog waste bins for incineration. Just under four-fifths (78%) directed this waste to landfill. The 'other' responses given included four authorities that stated that their dog waste was collected and disposed of by a contractor and one authority that said that their waste was taken to a specialist treatment contractor, before deep landfill takes place.

A quarter (25%) of local authorities that had dog waste bins stated that they incurred additional costs for disposing of the contents of the bins, which compares favourably with the 2002 survey, which found that 27% of authorities incurred additional costs.

9.3 Clearing up dog fouling

Local authorities were asked if they cleaned up dog fouling as part of the current street cleansing contract, the grounds maintenance contract, as a special clean up operation or in response to complaints. Figure 9.4 illustrates the findings

Figure 9.3 Does your authority clean up dog faeces...?



Around nine in 10 (91%) local authorities cleaned up dog fouling as part of their street cleansing contract, which is very similar to the proportion of authorities removing it under the same contract in the 2002 survey (91.5%). Just over three-quarters (77%) removed it in response to complaints. Around two-fifths (41%) removed it as part of a special clean up operation, whilst just over a third (36%) removed it as part of the grounds maintenance contract.

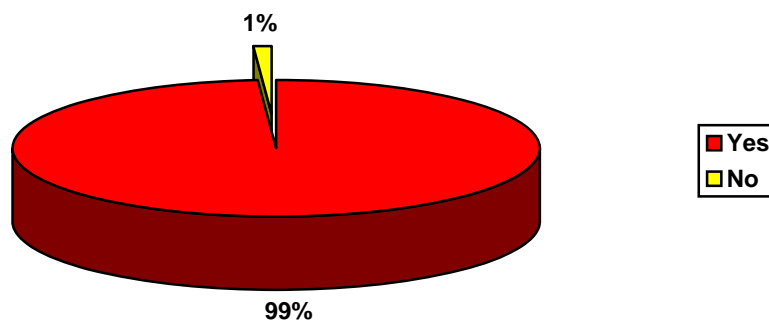
The results are consistent with those from the 2002 study, where 92% cleaned up dog fouling as part of the street cleansing contract, 33% cleaned up as part of the grounds maintenance contract and 27% removed it as a special clean up operation.

10 Clean Neighbourhoods and Environment Act

10.1 Awareness of new dog powers

Local authorities were asked if they were aware of the new dog powers in the Clean Neighbourhoods and Environment Act coming into force in from April 2006. Their responses are shown in figure 10.1 below.

Figure 10.1 Awareness of new dog powers



The results show that almost all local authorities were aware of the new dog powers in the Clean Neighbourhoods and Environment Act coming into force in April 2006.

10.2 Plans to implement dog control orders

Those local authorities that were aware of the new dog powers in the Clean Neighbourhoods and Environment Act were asked if they have any plans to implement dog control orders for the following:

- failing to remove dog faeces;
- not keeping a dog on a lead;
- not putting, and keeping, a dog on a lead when directed to do so by an authorised officer;
- permitting a dog to enter land from which dogs are excluded;
- taking more than a specified number of dogs onto land.

The results are shown in table 10.2 overleaf.

Table 10.2 Plans to implement dog control orders

	% of local authorities
Failing to remove dog faeces	88
Not keeping a dog on a lead	62
Permitting a dog to enter land from which dogs are excluded	58
Not putting, and keeping, a dog on a lead when directed to do so by an authorised officer	52
Taking more than a specified number of dogs onto land	32

Figures are percentage of authorities that answered 'yes'

Almost nine in 10 (88%) local authorities had plans to implement dog control orders for failing to remove dog faeces. Just less than two-thirds (62%) were planning to implement them for not keeping a dog on a lead. Almost six in 10 (58%) had plans to implement them for permitting a dog to enter land from which dogs are excluded and just over half (52%) had plans to implement a dog control order for not putting, and keeping, a dog on a lead when directed to do so by an authorised officer. Just under a third (32%) had plans to implement them for taking more than the specified number of dogs onto land.

Conclusion

Dog fouling is clearly a huge area of concern with the general public. This is apparent not only from the estimated 200,500 complaints made to local authorities in England in the last three years, but also by recent behavioural research carried out by ENCAMS. This found that dog fouling is clearly at the top of many people's list as the most offensive litter or refuse found in public places. This research also highlighted that there are at least 4.6m dog owners in the UK who are currently allowing their pets to foul and not taking responsibility for this by clearing it up.

Most local authorities have wardens employed in their area specifically to deal with dog issues. Three-quarters of authorities employed one or two dog wardens on a full time basis, whilst around a third employed the same number on a part time basis.

The most time consuming duty for dog wardens was attending to stray dogs – just 1% of authorities said that they did not spend any time on this task. It is encouraging that dog wardens spent a significant amount of time dealing with the enforcement of dog fouling legislation, though there were other officers within the authorities who also enforced dog control issues. These were primarily environmental health officers and environmental enforcement officers.

Despite the number of complaints received, most local authorities that responded had not utilised the powers available to them to deal with the issue. Twenty eight per cent of authorities had not given any verbal warnings to the public in the last financial year. Similarly, the level of prosecutions given was low with 62% of respondents not taking any in the last year and out of those that did, they averaged four prosecutions per authority.

Over 90% of local authorities had made designations under the Dogs (Fouling of Land) Act 1996. More than eight out of 10 of these were fully utilising the power of designation by designating all eligible land in that area.

Since 2002, slightly more authorities had adopted the Fixed Penalty Notice Scheme for dog fouling, with around eight in 10 local authorities having the scheme in their area. Some authorities were taking action and issuing notices; a total of 5,870 notices were issued in the last three years by the responding authorities, one

authority alone issued 405 notices in one year. Encouragingly, the majority of these (75%) had been paid. These schemes, however, are not being used to their full potential with the vast majority of these authorities issuing less than 20 notices per year and over 18% each year not issuing any fixed penalties at all.

It is clear that local authorities are aware that dog fouling is an issue and the majority (86%) have taken steps in their area to combat the problem. Interestingly, 91% of those taking action stated that they had introduced enforcement to combat dog fouling. Comparing this with the level of enforcement activity indicates that many of these authorities think of enforcement as designating areas of land and introducing the fixed penalty notice scheme rather than actually issuing warnings or notices and taking prosecutions. Many local authorities had erected anti-fouling signs and were promoting responsible ownership. Almost three-quarters of local authorities were also working with schools to educate children about the issue of dog fouling and the law.

There is no requirement under the law for authorities to provide special bins for dog waste, though many do provide them in public places to encourage responsible dog ownership. The majority of authorities providing bins had them sited in parks and on footpaths.

Almost all local authorities were aware of the new dog powers in the Clean Neighbourhoods and Environment Act which came into force in April 2006. Around nine in 10 planned to implement the new powers for failing to remove dog faeces. Around six out of 10 planned to implement them for not keeping a dog on a lead and permitting a dog to enter land from which dogs are excluded. Just over half have plans to implement them for not putting, and keeping, a dog on a lead when directed to do so by an authorised officer, and just under a third had plans to implement them for taking more than a specified number of dogs onto land.

It is evident that dog fouling is a widespread problem and most local authorities acknowledge this and have implemented some initiatives in their area to address the problem. Very few local authorities, however, are using the legislative powers available to their full potential to combat the problem. ENCAMS is aware that using legislation can be difficult, time consuming and expensive, though the behavioural research concluded that the fear of a financial penalty would be an effective way of persuading dog owners to act more responsibly. However, people are generally unaware of the incidence of fining and therefore don't believe they will be caught and

fined. ENCAMS urges more local authorities to not only designate areas and adopt schemes but also take more action to enforce this legislation to prove to the public that they can be caught and to ultimately change the behaviour of many dog owners in the future. ENCAMS will continue to track dog control issues over time and will collate and share best practice to help local authorities take effective action.

This survey report also forms part of our Control of Dogs Knowledge Bank, which is available to all local authorities and other land managers, and details other information, such as campaigning advice, case studies, useful links and contacts and current legislation.

Appendices

Appendix A All results by region

Appendix B Copy of the questionnaire

Appendix A All results by region

Q1 Do you have dog wardens employed within your authority?										
	East Mids (%)	East of England (%)	London (%)	North East (%)	North West (%)	South East (%)	South West (%)	West Mids (%)	Yorks. and the Humber (%)	National (%)
Yes	90	86	88	91	96	90	96	93	90	91
No	10	14	13	9	5	10	4	7	10	9
Total	100%	100%	101%	100%	101%	100%	100%	100%	100%	100%

Q2 How many dog wardens are employed by your authority?										
Full time	East Mids (%)	East of England (%)	London (%)	North East (%)	North West (%)	South East (%)	South West (%)	West Mids (%)	Yorks. and the Humber (%)	National (%)
0	13	5	14	0	0	7	16	25	0	9
1 – 2	80	84	71	67	88	85	58	67	56	75
3 – 5	7	10	14	33	12	7	21	0	33	13
6+	0	0	0	0	0	0	5	8	11	2
Total	100%	99%	99%	100%	100%	99%	100%	100%	100%	99%
Part time										
0	82	64	60	83	69	62	63	42	80	65
1 – 2	18	29	40	17	23	39	32	42	20	30
3 – 5	0	0	0	0	8	0	0	8	0	2
6+	0	7	0	0	0	0	6	8	0	3
Total	100%	100%	100%	100%	100%	101%	100%	100%	100%	100%

Q3a How much time as a percentage of year do dog wardens spend on dealing with dog fouling complaints?										
	East Mids (%)	East of England (%)	London (%)	North East (%)	North West (%)	South East (%)	South West (%)	West Mids (%)	Yorks. and the Humber (%)	National (%)
0%	12	0	29	11	0	7	5	8	0	7
1% - 10%	12	53	29	0	11	30	20	25	25	24
11% - 20%	59	35	14	22	44	19	30	42	63	36
21% - 40%	6	12	14	33	39	41	40	25	13	27
41% - 60%	12	0	14	33	6	4	5	0	0	7
61%+	0	0	0	0	0	0	0	0	0	0
Total	101%	100%	100%	99%	100%	101%	100%	100%	101%	101%

Q3b How much time as a percentage of year do dog wardens spend on enforcement of dog fouling legislation?										
	East Mids (%)	East of England (%)	London (%)	North East (%)	North West (%)	South East (%)	South West (%)	West Mids (%)	Yorks. and the Humber (%)	National (%)
0%	18	12	43	22	6	19	5	8	0	13
1% - 10%	35	59	43	22	33	48	60	50	63	47
11% - 20%	29	18	0	33	44	7	25	33	25	24
21% - 40%	6	6	14	22	17	15	10	8	13	12
41% - 60%	12	6	0	0	0	7	0	0	0	4
61%+	0	0	0	0	0	4	0	0	0	1
Total	100%	101%	100%	99%	100%	100%	100%	99%	101%	101%

Q3c How much time as a percentage of year do dog wardens spend on community campaigns?										
	East Mids (%)	East of England (%)	London (%)	North East (%)	North West (%)	South East (%)	South West (%)	West Mids (%)	Yorks. and the Humber (%)	National (%)
0%	18	29	29	33	22	37	20	33	13	27
1% - 10%	82	65	57	66	72	63	70	66	88	70
11% - 20%	0	6	14	0	6	0	10	0	0	4
21% - 40%	0	0	0	0	0	0	0	0	0	0
41% - 60%	0	0	0	0	0	0	0	0	0	0
61%+	0	0	0	0	0	0	0	0	0	0
Total	100%	100%	100%	99%	100%	100%	100%	99%	101%	101%

Q3d How much time as a percentage of year do dog wardens spend on education in schools?										
	East Mids (%)	East of England (%)	London (%)	North East (%)	North West (%)	South East (%)	South West (%)	West Mids (%)	Yorks. and the Humber (%)	National (%)
0%	29	29	86	22	33	44	20	25	38	34
1% - 10%	65	59	14	77	56	56	80	58	63	61
11% - 20%	6	12	0	0	11	0	0	8	0	4
21% - 40%	0	0	0	0	0	0	0	0	0	0
41% - 60%	0	0	0	0	0	0	0	8	0	1
61%+	0	0	0	0	0	0	0	0	0	0
Total	100%	100%	100%	99%	100%	100%	100%	99%	101%	100%

Q3e How much time as a percentage of year do dog wardens spend on dealing with complaints regarding noisy dogs?										
	East Mids (%)	East of England (%)	London (%)	North East (%)	North West (%)	South East (%)	South West (%)	West Mids (%)	Yorks. and the Humber (%)	National (%)
0%	41	18	43	66	39	37	15	75	50	39
1% - 10%	24	35	29	22	39	22	45	0	13	27
11% - 20%	18	6	14	11	22	26	25	17	25	19
21% - 40%	18	41	0	0	0	15	15	8	13	14
41% - 60%	0	0	14	0	0	0	0	0	0	1
61%+	0	0	0	0	0	0	0	0	0	0
Total	101%	100%	100%	99%	100%	100%	100%	100%	101%	100%

Q3f How much time as a percentage of year do dog wardens spend on dealing with strays?										
	East Mids (%)	East of England (%)	London (%)	North East (%)	North West (%)	South East (%)	South West (%)	West Mids (%)	Yorks. and the Humber (%)	National (%)
0%	0	0	0	0	0	4	0	8	0	1
1% - 10%	12	6	14	0	6	7	15	0	0	7
11% - 20%	24	24	43	44	11	19	15	25	13	21
21% - 40%	41	47	29	44	67	41	55	25	63	47
41% - 60%	6	6	0	0	17	19	5	25	25	12
61%+	18	18	14	11	0	11	10	17	0	11
Total	101%	101%	100%	99%	101%	101%	100%	100%	101%	99%

Q3g How much time as a percentage of year do dog wardens spend on attending to dangerous dogs (patrol/seizure)?										
	East Mids (%)	East of England (%)	London (%)	North East (%)	North West (%)	South East (%)	South West (%)	West Mids (%)	Yorks. and the Humber (%)	National (%)
0%	29	29	57	44	39	30	35	42	0	33
1% - 10%	65	65	43	55	50	70	60	50	100	62
11% - 20%	0	0	0	0	11	0	5	0	0	2
21% - 40%	0	6	0	0	0	0	0	8	0	1
41% - 60%	6	0	0	0	0	0	0	0	0	1
61%+	0	0	0	0	0	0	0	0	0	0
Total	100%	100%	100%	99%	100%	100%	100%	100%	100%	99%

Q3h How much time as a percentage of year do dog wardens spend on undertaking dangerous dogs enforcement?										
	East Mids (%)	East of England (%)	London (%)	North East (%)	North West (%)	South East (%)	South West (%)	West Mids (%)	Yorks. and the Humber (%)	National (%)
0%	53	71	43	66	56	56	60	75	0	56
1% - 10%	47	18	57	33	33	41	40	25	88	39
11% - 20%	0	6	0	0	11	4	0	0	13	4
21% - 40%	0	6	0	0	0	0	0	0	0	1
41% - 60%	0	0	0	0	0	0	0	0	0	0
61%+	0	0	0	0	0	0	0	0	0	0
Total	100%	101%	100%	99%	100%	101%	100%	100%	101%	100%

Q3i How much time as a percentage of year do dog wardens spend on microchipping?										
	East Mids (%)	East of England (%)	London (%)	North East (%)	North West (%)	South East (%)	South West (%)	West Mids (%)	Yorks. and the Humber (%)	National (%)
0%	53	41	29	11	56	56	65	58	25	49
1% - 10%	47	53	43	77	33	44	35	42	75	47
11% - 20%	0	6	14	11	11	0	0	0	0	4
21% - 40%	0	0	14	0	0	0	0	0	0	1
41% - 60%	0	0	0	0	0	0	0	0	0	0
61%+	0	0	0	0	0	0	0	0	0	0
Total	100%	100%	100%	99%	100%	100%	100%	100%	100%	101%

Q3j How much time as a percentage of year do dog wardens spend on other activities?										
	East Mids (%)	East of England (%)	London (%)	North East (%)	North West (%)	South East (%)	South West (%)	West Mids (%)	Yorks. and the Humber (%)	National (%)
0%	94	41	43	77	72	63	75	58	38	65
1% - 10%	6	35	29	22	11	26	15	25	38	21
11% - 20%	0	12	14	0	0	7	0	8	25	6
21% - 40%	0	6	14	0	11	4	10	8	0	6
41% - 60%	0	6	0	0	6	0	0	0	0	1
61%+	0	0	0	0	0	0	0	0	0	0
Total	100%	100%	100%	99%	100%	100%	100%	99%	101%	99%

Q3k In what other ways do dog wardens spend their time?	
	National (no. respondents)
Animal welfare	8
Admininstration	4
Animal licensing	4
Patrols	4
General advice	2
Cruelty complaints	2
Evictions/transport for social services	2
Vehicle maintenance	1
Fouling in gardens	1
Animal control (not dogs)	1
Animal noise	1
Byelaw offences	1
Collecting unwanted dogs	1
Community enforcement	1
Community meetings	1
Neutering	1
Environment protection duties	1
Training	1
Pest control	1
Sick and injured wild and domestic animals	1
Signage	1
Dog bins	1
Shows	1
Other animal complaints	1
Not specified	2
Total	45 responses

Base: 38 respondents who said that dog wardens spend their time in other ways – some gave more than one response

Q4ai Do any of the following officers in your authority enforce dog control issues – neighbourhood wardens?										
	East Mids (%)	East of England (%)	London (%)	North East (%)	North West (%)	South East (%)	South West (%)	West Mids (%)	Yorks. and the Humber (%)	National (%)
Yes	22	16	29	55	18	15	6	8	22	19
No	78	84	71	46	82	85	94	92	79	81
Total	100%	100%	100%	101%	100%	100%	100%	99%	101%	100%

Q4aii How many neighbourhood wardens enforce dog control issues in your authority?	
Full time	National (%)
0	35
1 – 2	29
3 – 5	6
6+	29
Total	99%
Part time	
0	94
1 – 2	0
3 – 5	0
6+	6
Total	100%

Base: 17 respondents answering 'yes' at Q4ai and specifying a number of officers

Q4bi Do any of the following officers in your authority enforce dog control issues – environmental enforcement officers (or similar)?										
	East Mids (%)	East of England (%)	London (%)	North East (%)	North West (%)	South East (%)	South West (%)	West Mids (%)	Yorks. and the Humber (%)	National (%)
Yes	50	32	43	46	35	19	41	42	22	35
No	50	68	57	55	65	82	59	58	78	65
Total	100%	100%	100%	101%	100%	101%	100%	99%	100%	100%

Q4bii How many environmental enforcement officers enforce dog control issues in your authority?	
Full time	National (%)
0	29
1 – 2	26
3 – 5	17
6+	29
Total	101%
Part time	
0	89
1 – 2	6
3 – 5	3
6+	3
Total	101%

Base: 35 respondents answering 'yes' at Q4bi and specifying a number of officers

Q4ci Do any of the following officers in your authority enforce dog control issues – Police Community Support Officers (PCSOs)?										
	East Mids (%)	East of England (%)	London (%)	North East (%)	North West (%)	South East (%)	South West (%)	West Mids (%)	Yorks. and the Humber (%)	National (%)
Yes	24	22	29	18	18	19	24	25	22	22
No	77	78	71	82	82	82	77	75	78	79
Total	101%	100%	100%	100%	100%	101%	101%	100%	100%	101%

Q4cii How many Police Community Support Officers enforce dog control issues in your authority?	
Full time	National (%)
0	27
1 – 2	9
3 – 5	27
6+	36
Total	99%
Part time	
0	87
1 – 2	9
3 – 5	0
6+	4
Total	100%

Base: 22 respondents answering 'yes' at Q4c and specifying a number of officers

Q4di Do any of the following officers in your authority enforce dog control issues – cleansing/grounds maintenance operatives?										
	East Mids (%)	East of England (%)	London (%)	North East (%)	North West (%)	South East (%)	South West (%)	West Mids (%)	Yorks. and the Humber (%)	National (%)
Yes	11	16	0	27	6	7	6	17	11	11
No	89	84	100	73	94	93	94	83	89	89
Total	100%	100%	100%	100%	100%	100%	100%	99%	100%	100%

Q4dii How many cleansing/grounds maintenance operatives enforce dog control issues in your authority?	
Full time	National (%)
0	54
1 – 2	15
3 – 5	8
6+	23
Total	100%
Part time	
0	89
1 – 2	0
3 – 5	11
6+	0
Total	100%

Base: 13 respondents answering 'yes' at Q4di and specifying a number of officers

Q4ei Do any of the following officers in your authority enforce dog control issues – environmental health officers?										
	East Mids (%)	East of England (%)	London (%)	North East (%)	North West (%)	South East (%)	South West (%)	West Mids (%)	Yorks. and the Humber (%)	National (%)
Yes	61	36	0	55	41	22	41	42	11	37
No	39	63	100	46	59	78	59	58	89	64
Total	100%	99%	100%	101%	100%	100%	100%	100%	100%	101%

Q4eii How many Environmental Health Officers enforce dog control issues in your authority?	
Full time	National (%)
0	31
1 – 2	34
3 – 5	19
6+	16
Total	100%
Part time	
0	77
1 – 2	14
3 – 5	6
6+	3
Total	100%

Base: 32 respondents answering 'yes' at Q4ei and specifying a number of officers

Q4fi Do any of the following officers in your authority enforce dog control issues – other officers?										
	East Mids (%)	East of England (%)	London (%)	North East (%)	North West (%)	South East (%)	South West (%)	West Mids (%)	Yorks. and the Humber (%)	National (%)
Yes	28	11	29	18	29	19	29	42	22	24
No	72	90	71	82	71	82	71	58	78	76
Total	100%	101%	100%	100%	100%	101%	100%	99%	100%	100%

Q4fii How many other officers enforce dog control issues in your authority?	
Full time	National (%)
0	0
1 – 2	100
3 – 5	0
6+	0
Total	100%
Part time	
0	83
1 – 2	17
3 – 5	0
6+	0
Total	100%

Base: 6 respondents answering 'yes' at Q4fi and specifying a number of officers

Q4g Which other officers enforce dog control issues in your authority?	
	National (no. respondents)
Countryside/park rangers	4
Beach inspectors	3
Contracted dog wardens	3
Trading standards officers	2
Parking staff	2
Street scene officers	2
Accredited officers	1
Bereavement care	1
Housing officers	1
Byeaws officers	1
Cleaning staff	1
Community safety officers	1
Dog warden manager	1
Education officers	1
Parish council wardens	1
Pest control officers	1
Technical officers	1
Urban rangers	1
Waste services staff	1
Not specified	7
Total	33 responses

Base: 33 respondents answering 'yes' at Q4

Q5 Does your authority have an education campaign to encourage responsible dog ownership?										
	East Mids (%)	East of England (%)	London (%)	North East (%)	North West (%)	South East (%)	South West (%)	West Mids (%)	Yorks. and the Humber (%)	National (%)
Yes	90	86	75	100	86	81	83	85	100	86
No	10	14	25	0	14	19	17	15	0	14
Total	100%	100%	100%	100%	100%	100%	100%	100%	100%	100%

Q6a What does the campaign consist of?										
	East Mids (%)	East of England (%)	London (%)	North East (%)	North West (%)	South East (%)	South West (%)	West Mids (%)	Yorks. and the Humber (%)	National (%)
Posters/displays in public places	55	52	38	55	74	68	61	77	80	73
Leaflet distribution	90	43	50	73	84	55	52	69	80	75
Installing dog waste bins	70	76	63	73	53	77	78	62	80	83
Dog toilets in parks	10	5	0	0	11	10	9	15	0	9
Enforcement	80	67	63	91	84	71	83	77	100	91
Erection of anti-fouling signs	90	81	63	91	79	74	78	77	90	93
Providing free poop scoops (or equivalent)	75	57	50	55	74	58	26	62	80	68
Media coverage/ advertising	60	43	38	55	63	42	39	62	80	60
Work with schools	65	57	50	73	63	55	70	62	80	73
Other	20	10	38	18	32	7	22	31	60	25

Q6b What other things does the campaign consist of?	
	National (no. respondents)
Attending dog shows/events	8
Microchipping	7
Kennel Club's Good Citizen Dog Scheme	4
Work with Dogs Trust	3
Website	2
Training courses	2
Neutering	2
Work with parish councils	2
Work with community groups	2
Articles in council publications	1

Development of dog watch areas	1
Free poop scoops and dog chews given out to owners who clean up after their dog	1
Booklets	1
Radio advertising	1
Monthly prize draw for responsible owners	1
Dog-only walking areas	1
Participation in Noise Action Week	1
TV advertisement	1
Work with police	1
Work with dog training clubs	1
Work with RSPCA	1
Work with stray dog kennels	1
Total	45 responses

Base: 34 respondents who said that their campaign consisted of other elements – some respondents gave more than one response.

Q7a How many complaints about dog fouling have been received in your authority in April 2002 – March 2003?										
	East Mids (%)	East of England (%)	London (%)	North East (%)	North West (%)	South East (%)	South West (%)	West Mids (%)	Yorks. and the Humber (%)	National (%)
0	0	0	0	0	0	4	0	0	13	2
1-100	53	67	25	20	6	41	45	30	13	38
101-200	29	28	50	30	31	44	20	30	0	30
201-300	12	6	25	10	31	7	20	30	25	16
301-400	0	0	0	30	0	0	15	0	25	6
401-1000	6	0	0	0	31	4	0	10	25	8
1001+	0	0	0	10	0	0	0	0	0	1
Total	100%	101%	100%	100%	99%	100%	100%	100%	101%	101%

Q7b How many complaints about dog fouling have been received in your authority in April 2003 – March 2004?										
	East Mids (%)	East of England (%)	London (%)	North East (%)	North West (%)	South East (%)	South West (%)	West Mids (%)	Yorks. And the Humber (%)	National (%)
0	0	0	0	0	0	4	0	0	0	1
1-100	56	56	20	10	6	42	40	20	0	33
101-200	17	39	40	30	33	46	25	30	13	32
201-300	17	6	20	20	33	4	15	40	38	18
301-400	11	0	0	20	6	0	20	10	13	8
401-1000	0	0	20	10	22	4	0	0	38	8
1001+	0	0	0	10	0	0	0	0	0	1
Total	100%	100%	100%	100%	100%	100%	100%	100%	102%	101%

Q7c How many complaints about dog fouling have been received in your authority in April 2004 – March 2005?										
	East Mids (%)	East of England (%)	London (%)	North East (%)	North West (%)	South East (%)	South West (%)	West Mids (%)	Yorks. and the Humber (%)	National (%)
0	0	0	0	0	0	0	0	0	0	0
1-100	50	48	67	9	16	46	34	27	20	33
101-200	34	48	0	36	26	50	29	18	0	34
201-300	11	5	17	9	32	0	19	46	0	14
301-400	6	0	0	18	5	0	10	9	40	8
401-1000	0	0	17	18	21	4	10	0	40	10
1001+	0	0	0	9	0	0	0	0	0	1
Total	101%	101%	101%	99%	100%	100%	102%	100%	100%	100%

Q8ai How many verbal warnings have been given out about dog fouling in April 2002 – March 2003?										
	East Mids (%)	East of England (%)	London (%)	North East (%)	North West (%)	South East (%)	South West (%)	West Mids (%)	Yorks. and the Humber (%)	National (%)
0	0	25	50	0	33	50	50	17	80	37
1-25	71	75	0	100	33	29	20	33	0	37
26-50	14	0	50	0	11	7	20	17	0	11
51-75	0	0	0	0	11	0	0	0	0	2
76-100	0	0	0	0	0	7	10	17	20	6
101-200	0	0	0	0	0	7	0	17	0	3
201+	14	0	0	0	11	0	0	0	0	3
Total	99%	100%	100%	100%	99%	100%	100%	101%	100%	99%

Q8aii How many written warnings have been given out about dog fouling in April 2002 – March 2003?										
	East Mids (%)	East of England (%)	London (%)	North East (%)	North West (%)	South East (%)	South West (%)	West Mids (%)	Yorks. and the Humber (%)	National (%)
0	10	25	50	0	33	47	36	13	29	29
1-25	70	38	0	67	33	24	27	63	29	39
26-50	20	25	50	0	0	24	9	25	14	17
51-75	0	13	0	0	0	6	9	0	0	4
76-100	0	0	0	0	11	0	0	0	0	1
101-200	0	0	0	33	0	0	18	0	0	4
201+	0	0	0	0	22	0	0	0	29	5
Total	100%	100%	100%	100%	99%	101%	100%	101%	100%	99%

Q8bi How many verbal warnings have been given out about dog fouling in April 2003 – March 2004?										
	East Mids (%)	East of England (%)	London (%)	North East (%)	North West (%)	South East (%)	South West (%)	West Mids (%)	Yorks. and the Humber (%)	National (%)
0	0	25	50	0	30	40	36	33	80	34
1-25	57	75	0	100	30	27	36	17	0	35
26-50	29	0	50	0	30	20	18	0	0	17
51-75	0	0	0	0	0	7	9	17	0	3
76-100	0	0	0	0	0	7	0	17	0	5
101-200	0	0	0	0	0	0	0	17	20	3
201+	14	0	0	0	10	0	0	0	0	3
Total	100%	100%	100%	100%	100%	101%	99%	101%	100%	100%

Q8bii How many written warnings have been given out about dog fouling in April 2003 – March 2004?										
	East Mids (%)	East of England (%)	London (%)	North East (%)	North West (%)	South East (%)	South West (%)	West Mids (%)	Yorks. and the Humber (%)	National (%)
0	10	25	33	0	22	4	33	0	0	24
1-25	90	50	0	67	44	24	33	100	50	50
26-50	0	25	67	0	0	24	17	0	0	13
51-75	0	0	0	0	0	6	0	0	17	3
76-100	0	0	0	0	22	0	8	0	0	4
101-200	0	0	0	33	0	0	8	0	0	3
201+	0	0	0	0	11	0	0	0	34	4
Total	100%	100%	100%	100%	99%	101%	100%	100%	101%	101%

Q8ci How many verbal warnings have been given out about dog fouling in April 2004 – March 2005?										
	East Mids (%)	East of England (%)	London (%)	North East (%)	North West (%)	South East (%)	South West (%)	West Mids (%)	Yorks. and the Humber (%)	National (%)
0	0	22	50	0	30	31	25	33	60	28
1-25	57	67	0	100	50	50	42	0	0	43
26-50	29	11	50	0	10	6	25	17	20	16
51-75	0	0	0	0	0	0	8	0	0	1
76-100	0	0	0	0	0	13	0	33	0	6
101-200	14	0	0	0	0	0	0	17	20	4
201+	0	0	0	0	10	0	0	0	0	1
Total	100%	100%	100%	100%	100%	100%	100%	100%	100%	99%

Q8cii How many written warnings have been given out about dog fouling in April 2004 – March 2005?										
	East Mids (%)	East of England (%)	London (%)	North East (%)	North West (%)	South East (%)	South West (%)	West Mids (%)	Yorks. and the Humber (%)	National (%)
0	10	20	33	0	20	33	23	13	0	20
1-25	80	40	0	75	50	39	38	63	33	48
26-50	10	30	67	0	0	11	8	13	17	13
51-75	0	10	0	0	10	11	15	13	0	9
76-100	0	0	0	0	0	6	8	0	0	2
101-200	0	0	0	25	10	0	8	0	17	5
201+	0	0	0	0	10	0	0	0	33	4
Total	100%	100%	100%	100%	100%	100%	100%	102%	100%	101%

Q9 Has your authority made designations under the Dogs (Fouling of Land) Act 1996?										
	East Mids (%)	East of England (%)	London (%)	North East (%)	North West (%)	South East (%)	South West (%)	West Mids (%)	Yorks. and the Humber (%)	National (%)
Yes	90	91	88	100	100	90	96	86	100	93
No	10	10	0	0	0	10	4	7	0	6
No, but likely to in next six months	0	0	13	0	0	0	0	7	0	1
Total	100%	101%	101%	100%	100%	100%	100%	100%	100%	100%

Q10 When did the designations come into effect?										
	East Mids (%)	East of England (%)	London (%)	North East (%)	North West (%)	South East (%)	South West (%)	West Mids (%)	Yorks. and the Humber (%)	National (%)
1996	5	5	0	9	5	10	17	14	10	9
1997	5	18	0	18	41	19	17	21	10	23
1998	40	27	13	9	9	16	13	0	40	19
1999	0	14	13	18	0	6	4	14	10	8
2000	5	0	13	0	0	3	0	14	10	4
2001	0	0	0	9	9	10	0	0	0	4
2002	10	0	0	18	5	3	9	0	0	4
2003	0	0	0	0	0	0	0	0	0	0
2004	10	0	13	0	0	0	0	7	0	3
2005	5	0	13	0	0	3	4	7	0	3
Not specified	20	36	38	18	32	29	35	21	20	22
Total	100%	100%	100%	100%	101%	100%	100%	98%	100%	99%

Q11a What types of land are covered?										
	East Mids (%)	East of England (%)	London (%)	North East (%)	North West (%)	South East (%)	South West (%)	West Mids (%)	Yorks. and the Humber (%)	National (%)
All eligible	72	89	80	91	79	77	95	75	80	82
Parks and open spaces	6	0	0	0	0	0	0	8	0	1
Parks, open spaces, footpaths and pavements	22	11	0	9	11	15	5	17	0	12
Designated areas	0	0	20	0	11	8	0	0	20	5
Total	100%	100%	100%	100%	101%	100%	100%	99%	100%	100%

Q11b What are the designated areas?	
	National (no. of respondents)
Access to beaches	1
All carriageways with 40 mph speed limit, all footpaths defined in S329 of Highways Act 1980, all land held by council for housing purposes, except gardens, all parks, sports/recreation grounds and open spaces owned and maintained by council	1
All district council land and certain lands belonging to parish council	1
All land, but with certain exceptions	1
Parks, open spaces, footpaths and pavements, plus beaches	1
Not specified	2
Total	7 responses

Base: 7 respondents answering 'designated areas' at Q11

Q12a How many prosecutions have been taken in April 2002 – March 2003?										
	East Mids (%)	East of England (%)	London (%)	North East (%)	North West (%)	South East (%)	South West (%)	West Mids (%)	Yorks. and the Humber (%)	National (%)
0	69	90	100	56	29	67	56	64	17	61
1-20	31	11	0	44	65	33	38	36	67	36
21-40	0	0	0	0	6	0	6	0	17	3
41-60	0	0	0	0	0	0	0	0	0	0
61+	0	0	0	0	0	0	0	0	0	0
Total	100%	101%	100%	100%	100%	100%	100%	99%	101%	100%

Q12b How many prosecutions have been taken in April 2003 – March 2004?										
	East Mids (%)	East of England (%)	London (%)	North East (%)	North West (%)	South East (%)	South West (%)	West Mids (%)	Yorks. and the Humber (%)	National (%)
0	63	95	75	55	41	76	47	75	14	63
1-20	31	5	0	36	53	24	53	25	71	33
21-40	6	0	0	9	0	0	0	0	0	2
41-60	0	0	0	0	0	0	0	0	0	0
61+	0	0	25	0	6	0	0	0	14	2
Total	100%	100%	100%	100%	100%	100%	100%	99%	100%	100%

Q12c How many prosecutions have been taken in April 2004 – March 2005?										
	East Mids (%)	East of England (%)	London (%)	North East (%)	North West (%)	South East (%)	South West (%)	West Mids (%)	Yorks. and the Humber (%)	National (%)
0	65	79	80	55	47	81	43	67	33	62
1-20	35	21	0	27	48	19	57	33	55	35
21-40	0	0	0	9	0	0	0	0	0	1
41-60	0	0	0	9	0	0	0	0	11	1
61+	0	0	20	0	6	0	0	0	0	1
Total	100%	100%	100%	100%	101%	100%	100%	100%	99%	100%

Q12d How many prosecutions are pending for April 2004 – March 2005?										
	East Mids (%)	East of England (%)	London (%)	North East (%)	North West (%)	South East (%)	South West (%)	West Mids (%)	Yorks. and the Humber (%)	National (%)
0	93	100	75	86	77	95	71	67	63	85
1-20	7	0	25	14	24	5	29	33	38	15
21-40	0	0	0	0	0	0	0	0	0	0
41-60	0	0	0	0	0	0	0	0	0	0
61+	0	0	0	0	0	0	0	0	0	0
Total	100%	100%	100%	100%	101%	100%	100%	100%	101%	100%

Q13a If successful prosecutions have been taken, please state the range of fines granted – lowest figures in range	
	National (%)
1-25	19
26-50	51
51-75	12
76-100	9
101-200	8
201+	0
Total	99%

Q13b If successful prosecutions have been taken, please state the range of fines granted – highest figures in range	
	National (%)
1-25	0
26-50	23
51-75	12
76-100	24
101-200	31
201+	9
Total	99%

Q13c If successful prosecutions have been taken, please state the range of costs granted – lowest figures in range	
	National (%)
1-25	20
26-50	39
51-75	14
76-100	11
101-200	13
201+	3
Total	100%

Q13d If successful prosecutions have been taken, please state the range of costs granted – highest figures in range	
	National (%)
1-25	3
26-50	19
51-75	17
76-100	23
101-200	23
201+	14
Total	99%

Q14a Has your authority adopted the Fixed Penalty Notice Scheme for dog fouling?										
	East Mids (%)	East of England (%)	London (%)	North East (%)	North West (%)	South East (%)	South West (%)	West Mids (%)	Yorks. and the Humber (%)	National (%)
Yes	90	86	71	91	96	74	87	57	70	82
No	10	14	29	9	5	26	13	43	30	18
Total	100%	100%	100%	100%	101%	100%	100%	99%	100%	100%

Q14b When did the Fixed Penalty Notice Scheme commence?										
	East Mids (%)	East of England (%)	London (%)	North East (%)	North West (%)	South East (%)	South West (%)	West Mids (%)	Yorks. and the Humber (%)	National (%)
1995 or earlier	0	0	0	0	6	0	6	17	0	2
1996	0	0	0	0	0	13	19	17	0	6
1997	7	11	0	11	18	27	13	0	0	14
1998	29	44	0	0	29	20	13	33	0	19
1999	7	33	0	11	0	7	0	17	40	11
2000	0	0	0	11	6	7	0	0	0	4
2001	7	0	33	33	18	13	6	0	20	13
2002	7	0	0	22	18	7	19	0	0	10
2003	14	0	33	11	0	0	6	0	20	6
2004	21	11	33	0	0	0	6	0	20	7
2005	14	0	0	0	6	7	6	17	0	6
2006	0	0	0	0	0	0	6	0	0	1
Total	106%	99%	99%	99%	101%	101%	100%	101%	100%	99%

Q15a How many fixed penalty notices have been issued in April 2002 – March 2003?										
	East Mids (%)	East of England (%)	London (%)	North East (%)	North West (%)	South East (%)	South West (%)	West Mids (%)	Yorks. and the Humber (%)	National (%)
0	43	39	50	0	29	16	23	33	50	28
1-20	50	54	50	75	43	63	46	50	25	53
21-40	7	8	0	0	7	16	15	0	0	9
41-60	0	0	0	13	0	5	0	17	0	3
61-100	0	0	0	13	14	0	15	0	0	5
101+	0	0	0	0	7	0	0	0	25	2
Total	100%	101%	100%	101%	100%	100%	99%	100%	100%	100%

Q15b How many fixed penalty notices have been paid for April 2002 – March 2003?										
	East Mids (%)	East of England (%)	London (%)	North East (%)	North West (%)	South East (%)	South West (%)	West Mids (%)	Yorks. and the Humber (%)	National (%)
0	46	33	50	13	31	12	21	20	50	27
1-20	46	67	50	63	46	65	50	60	25	55
21-40	8	0	0	13	0	18	14	0	0	8
41-60	0	0	0	13	0	6	7	20	0	5
61-100	0	0	0	0	15	0	7	0	25	5
101+	0	0	0	0	8	0	0	0	0	1
Total	100%	100%	100%	100%	100%	101%	99%	100%	100%	101%

Q15c How many fixed penalty notices have been issued in April 2003 – March 2004?										
	East Mids (%)	East of England (%)	London (%)	North East (%)	North West (%)	South East (%)	South West (%)	West Mids (%)	Yorks. and the Humber (%)	National (%)
0	50	40	50	10	13	25	13	0	14	25
1-20	44	53	50	50	50	55	60	83	43	53
21-40	6	7	0	0	13	15	20	0	14	10
41-60	0	0	0	10	13	5	0	17	29	6
61-100	0	0	0	0	6	0	7	0	0	2
101+	0	0	0	30	6	0	0	0	0	4
Total	100%	100%	100%	100%	101%	100%	100%	100%	100%	100%

Q15d How many fixed penalty notices have been paid for April 2003 – March 2004?										
	East Mids (%)	East of England (%)	London (%)	North East (%)	North West (%)	South East (%)	South West (%)	West Mids (%)	Yorks. and the Humber (%)	National (%)
0	43	31	0	0	13	12	0	20	0	16
1-20	50	69	100	50	53	71	71	60	67	63
21-40	7	0	0	13	7	12	21	20	0	10
41-60	0	0	0	0	20	6	0	0	33	6
61-100	0	0	0	0	0	0	7	0	0	1
101+	0	0	0	38	7	0	0	0	0	4
Total	100%	100%	100%	101%	100%	101%	99%	100%	100%	100%

Q15e How many fixed penalty notices have been issued in April 2004 – March 2005?										
	East Mids (%)	East of England (%)	London (%)	North East (%)	North West (%)	South East (%)	South West (%)	West Mids (%)	Yorks. and the Humber (%)	National (%)
0	27	35	0	18	11	19	11	14	0	18
1-20	67	59	100	45	53	67	61	72	43	61
21-40	7	6	0	9	21	9	17	14	43	13
41-60	0	0	0	9	0	5	0	0	0	2
61-100	0	0	0	0	11	0	6	0	14	4
101+	0	0	0	18	5	0	6	0	0	3
Total	101%	100%	100%	99%	101%	100%	101%	100%	100%	101%

Q15f How many fixed penalty notices have been paid for April 2004 – March 2005?										
	East Mids (%)	East of England (%)	London (%)	North East (%)	North West (%)	South East (%)	South West (%)	West Mids (%)	Yorks. and the Humber (%)	National (%)
0	40	38	0	18	16	16	11	40	0	21
1-20	53	62	100	45	53	74	78	60	72	64
21-40	7	0	0	0	21	5	6	0	14	7
41-60	0	0	0	9	0	5	0	0	0	2
61-100	0	0	0	18	5	0	6	0	14	4
101+	0	0	0	9	5	0	0	0	0	2
Total	100%	100%	100%	99%	100%	100%	101%	99%	100%	100%

Q16a How many dog bins does your authority provide in parks?										
	East Mids (%)	East of England (%)	London (%)	North East (%)	North West (%)	South East (%)	South West (%)	West Mids (%)	Yorks. and the Humber (%)	National (%)
0	9	8	0	33	9	0	8	18	100	11
1-25	9	25	0	17	36	23	8	45	0	22
26-50	36	25	25	0	27	8	17	9	0	19
51-75	9	0	0	0	9	8	25	0	0	7
76-100	18	17	0	33	9	8	17	18	0	12
101-200	9	25	75	17	9	38	8	0	0	21
201+	9	0	0	0	0	15	17	9	0	7
Total	99%	100%	100%	100%	99%	100%	100%	99%	100%	99%

Q16b How many dog bins does your authority provide on pavements?										
	East Mids (%)	East of England (%)	London (%)	North East (%)	North West (%)	South East (%)	South West (%)	West Mids (%)	Yorks. and the Humber (%)	National (%)
0	33	25	33	40	25	27	30	29	100	31
1-25	11	13	33	40	38	18	20	71	0	27
26-50	22	25	0	0	0	36	10	0	0	15
51-75	0	0	0	0	0	0	10	0	0	2
76-100	11	13	0	0	0	0	10	0	0	5
101-200	22	25	33	0	25	9	20	0	0	16
201+	0	0	0	20	13	9	0	0	0	5
Total	99%	101%	99%	100%	101%	100%	100%	100%	100%	101%

Q16c How many dog bins does your authority provide on beaches?										
	East Mids (%)	East of England (%)	London (%)	North East (%)	North West (%)	South East (%)	South West (%)	West Mids (%)	Yorks. and the Humber (%)	National (%)
0	100	67	100	100	80	64	50	100	100	78
1-25	0	17	0	0	20	18	30	0	0	14
26-50	0	0	0	0	0	9	20	0	0	5
51-75	0	17	0	0	0	9	0	0	0	3
76-100	0	0	0	0	0	0	0	0	0	0
101-200	0	0	0	0	0	0	0	0	0	0
201+	0	0	0	0	0	0	0	0	0	0
Total	100%	101%	100%	100%	100%	100%	100%	100%	100%	100%

Q16d How many dog bins does your authority provide in sports grounds?										
	East Mids (%)	East of England (%)	London (%)	North East (%)	North West (%)	South East (%)	South West (%)	West Mids (%)	Yorks. and the Humber (%)	National (%)
0	63	25	-	50	38	42	36	38	100	42
1-25	38	50	-	25	63	17	45	63	0	42
26-50	0	25	-	0	0	17	9	0	0	8
51-75	0	0	-	0	0	17	0	0	0	3
76-100	0	0	-	0	0	0	0	0	0	0
101-200	0	0	-	25	0	0	9	0	0	3
201+	0	0	-	0	0	8	0	0	0	2
Total	101%	100%	-	100%	100%	101%	99%	101%	100%	100%

Q16e How many dog bins does your authority provide on footpaths?										
	East Mids (%)	East of England (%)	London (%)	North East (%)	North West (%)	South East (%)	South West (%)	West Mids (%)	Yorks. and the Humber (%)	National (%)
0	38	13	100	40	25	33	22	50	100	33
1-25	38	50	0	60	63	33	33	50	0	43
26-50	13	13	0	0	0	25	22	0	0	12
51-75	0	13	0	0	13	8	11	0	0	7
76-100	13	13	0	0	0	0	0	0	0	2
101-200	0	0	0	0	0	0	11	0	0	2
201+	0	0	0	0	0	0	0	0	0	2
Total	102%	100%	100%	100%	101%	99%	99%	100%	100%	101%

Q16f How many dog bins does your authority provide on housing estates?										
	East Mids (%)	East of England (%)	London (%)	North East (%)	North West (%)	South East (%)	South West (%)	West Mids (%)	Yorks. and the Humber (%)	National (%)
0	50	0	33	33	57	36	13	50	100	36
1-25	25	86	0	33	43	9	25	25	0	31
26-50	25	0	0	17	0	18	0	25	0	12
51-75	0	14	0	0	0	27	25	0	0	10
76-100	0	0	33	0	0	0	13	0	0	3
101-200	0	0	0	17	0	9	13	0	0	5
201+	0	0	33	0	0	0	13	0	0	3
Total	100%	100%	99%	100%	100%	99%	102%	100%	100%	100%

Q16g How many dog bins does your authority provide in other areas?										
	East Mids (%)	East of England (%)	London (%)	North East (%)	North West (%)	South East (%)	South West (%)	West Mids (%)	Yorks. and the Humber (%)	National (%)
0	86	83	100	100	67	90	44	56	100	73
1-25	0	17	0	0	0	0	33	33	0	13
26-50	14	0	0	0	0	0	0	0	0	2
51-75	0	0	0	0	17	0	0	0	0	2
76-100	0	0	0	0	0	0	11	0	0	2
101-200	0	0	0	0	17	10	0	11	0	4
201+	0	0	0	0	0	0	11	0	0	4
Total	100%	100%	100%	100%	101%	100%	99%	100%	100%	100%

Q16h In which other areas do you provide dog bins?	
	National (No. of respondents)
Car parks	4
Churchyards/cemeteries	4
Commons	1
Open spaces	3
Not specified	5
Total	17 responses

Base: 14 respondents who answered that they do provide dog bins in 'other areas'

Q17i Where are the contents of these bins disposed of? (Percentages are calculated out of all authorities with bins.)										
	East Mids (%)	East of England (%5)	London (%)	North East (%)	North West (%)	South East (%)	South West (%)	West Mids (%)	Yorks. and the Humber (%)	National (%)
Landfilled	82	91	29	75	84	83	67	58	100	78
Incinerated	18	5	57	25	16	13	29	33	0	19
Other	0	5	14	0	0	3	5	8	0	4
Total	100%	101%	100%	100%	100%	99%	101%	99%	100%	101%

Q17ii Where else are the contents of these bins disposed of?	
	National (no. of respondents)
Collected and disposed of by a contractor	4
Taken to a specialist treatment contractor before deep landfill takes place	1
Total	5 responses

Base: 5 respondents who answered 'other' at Q17i

Q18 Do you incur additional costs for disposing of the contents of the bins due to the waste being classified as Grade E clinical waste?										
	East Mids (%)	East of England (%)	London (%)	North East (%)	North West (%)	South East (%)	South West (%)	West Mids (%)	Yorks. and the Humber (%)	National (%)
Yes	22	15	67	0	22	32	28	36	0	25
No	78	85	33	100	78	68	72	64	100	75
Total	100%	100%	100%	100%	100%	100%	100%	99%	100%	100%

Q19a Does your authority clean up dog faeces...										
	East Mids (%)	East of England (%)	London (%)	North East (%)	North West (%)	South East (%)	South West (%)	West Mids (%)	Yorks. and the Humber (%)	National (%)
As part of the street cleansing contract	95	100	100	91	82	90	82	93	90	91
As part of the grounds maintenance contract	47	27	57	46	46	39	18	29	30	36
As a special clean-up operation	37	32	29	55	36	52	27	43	60	41
In response to complaints	79	73	57	73	77	81	73	79	90	77
Under any other circumstances not already mentioned	0	9	0	0	5	0	0	7	0	3

Q19b Under what other circumstances does your authority clean up dog faeces?		National (no. of respondents)
Animal welfare staff clean up small amounts during patrol visits		1
Not specified		3
Total		4

Base: 4 respondents who said that they clean up dog faeces under other circumstances at Q19a

Q20 Are you aware of the new dog powers in the Clean Neighbourhoods and Environment Act coming into force from April 2006?										
	East Mids (%)	East of England (%)	London (%)	North East (%)	North West (%)	South East (%)	South West (%)	West Mids (%)	Yorks. and the Humber (%)	National (%)
Yes	100	100	100	100	100	97	100	93	100	99
No	0	0	0	0	0	3	0	7	0	1
Total	100%	100%	100%	100%	100%	100%	100%	99%	100%	100%

Q21 Do you have any plans to implement dog control orders for the following?										
	East Mids (%)	East of England (%)	London (%)	North East (%)	North West (%)	South East (%)	South West (%)	West Mids (%)	Yorks. and the Humber (%)	National (%)
Failing to remove dog faeces	94	94	88	88	89	74	88	90	89	88
Not keeping a dog on a lead	53	39	63	88	74	48	63	67	89	62
Not putting, and keeping, a dog on a lead when directed to do so by an authorised officer	53	39	50	38	58	41	50	78	78	52
Permitting a dog to enter land from which dogs are excluded	47	44	63	63	79	50	63	33	78	58
Taking more than a specified number of dogs on to land	33	17	50	25	37	32	13	44	63	32

Appendix B – Copy of the questionnaire

CONTROL OF DOGS SURVEY 2005



Contact Name	
Authority Name	
Address	
Telephone	
Email address	

1. Do you have dog wardens employed within your authority?

- Yes
 No

If yes continue, otherwise go to Q4

2. How many wardens are employed by your authority?

Full time (please state number)	<input type="text"/>
Part time (please state number)	<input type="text"/>

3. Thinking only about work to tackle problems with dogs (that is, excluding any other work), how much time as a percentage of the year do dog wardens spend on each of the following activities? (An approximation will be acceptable.)

Dealing with dog fouling complaints	<input type="text"/>
Enforcement of dog fouling legislation	<input type="text"/>
Community campaigns	<input type="text"/>
Education in schools	<input type="text"/>
Dealing with complaints regarding noisy dogs	<input type="text"/>
Dealing with strays	<input type="text"/>
Attending to dangerous dogs (patrol/seizure)	<input type="text"/>
Undertaking dangerous dog enforcement	<input type="text"/>
Microchipping	<input type="text"/>
Other, please specify	<input type="text"/>
	100%

4. **Do any of the following other officers in your authority enforce dog control issues?** (Please tick all that apply and state the number of officers.)

	Full time	Part time
Neighbourhood wardens	<input type="checkbox"/>	
Environmental enforcement officers (or similar)	<input type="checkbox"/>	
Police Community Support Officers (PCSOs)	<input type="checkbox"/>	
Cleansing/grounds maintenance operatives	<input type="checkbox"/>	
Environmental health officers	<input type="checkbox"/>	
Other (please specify) _____	<input type="checkbox"/>	

5. **Does your authority have an education campaign to encourage responsible dog ownership?**

- Yes
 No

If yes continue, if no go to Q7

6. **What does this campaign consist of?** (Please tick all that apply.)

- Posters/displays in public places
 Leaflet distribution
 Installing dog waste bins
 Dog toilets in parks
 Enforcement
 Erection of anti-fouling signs
 Providing free poop scoops (or equivalent)
 Media coverage/advertising
 Work with schools
 Other, please specify

7. **How many complaints about dog fouling have been received in your authority in the last three years?**

April 2002 – March 2003	
April 2003 – March 2004	
April 2004 – March 2005	

8. **How many warnings have been given about dog fouling in the last three years?**

	Verbal	Written
April 2002 – March 2003		
April 2003 – March 2004		
April 2004 – March 2005		

9. Has your authority made designations under the Dogs (Fouling of Land) Act 1996?

- Yes
- No
- No, but likely to be in next 6 months

If yes continue, otherwise go to Q12

10. When did the designations come into effect?
 (Please state month and year)

11. What types of land are covered? *(Please tick one box only.)*

- All eligible
 - Parks and open spaces
 - Parks, open spaces, footpaths and pavements
 - Designated areas, please specify
-
-

12. How many prosecutions have been taken in the last three years? *(Please split between taken and pending for current financial year.)*

	Taken	Pending
April 2002 – March 2003		N/A
April 2003 – March 2004		N/A
April 2004 – March 2005		

13. If successful prosecutions have been taken, please state the range of fines and range of costs granted.

Range of fines	
Range of costs	

14. Has your authority adopted the fixed penalty notice scheme for dog fouling?

- Yes, please state date when FPN scheme commenced _____
- No

If yes continue, otherwise go to Q16

15. How many have been issued/paid in the last three years?

	Issued	Paid
April 2002 – March 2003		
April 2003 – March 2004		
April 2004 – March 2005		

16. **How many dog bins does your authority provide?** *(Please state number in each of the following areas.)*

Parks	
Pavements	
Beaches	
Sports grounds	
Footpaths	
Housing estates	
Other, please specify	

17. **Where are the contents of these bins disposed of?**

- Landfilled
 - Incinerated
 - Other, please specify
-

18. **Do you incur additional costs for disposing of the contents of the bins due to the waste being classified as Grade E clinical waste?**

- Yes
- No

19. **Does you authority clean up dog faeces....** *(Please tick all that apply.)*

- as part of the street cleansing contract
 - as part of the grounds maintenance contract
 - as a special clean up operation
 - in response to complaints
 - under any other circumstances not already mentioned, please specify
-

20. **Are you aware of the new dog powers in the Clean Neighbourhoods and Environment Act coming into force from April 2006?**

- Yes
- No

If yes continue, otherwise this is the end of the questionnaire

21. **Do you have any plans to implement dog control orders for the following?** *(Please tick all that apply.)*

- Failing to remove dog faeces
- Not keeping a dog on a lead
- Not putting, and keeping, a dog on a lead when directed to do so by an authorised officer
- Permitting a dog to enter land from which dogs are excluded
- Taking more than a specified number of dogs onto land

The results of this survey will be published in our forthcoming Knowledge Bank on Dogs, which will be released to Cleaner Safer Greener Network members in March 2006 and will be available on our website – www.encams.org in June 2006.

THANKYOU FOR TAKING THE TIME TO COMPLETE THIS QUESTIONNAIRE

Please return it by **Monday 12th December 2005** to:

Market Research Team
ENCAMS
Elizabeth House
The Pier
Wigan
WN3 4EX

Fax: 01942 824778